



MANOS DEL URUGUAY

FREE PATTERN



# Bizcocho

by Heather Zoppetti



MANOS DEL URUGUAY

## Bizcocho in Manos del Uruguay Silk Blend

### FINISHED MEASUREMENTS

XS (S, M, L, XL, 2X)

A - Finished bust circumference: 79 (88.5, 98, 107.5, 115.5, 125.5) cm/31<sup>3</sup>/<sub>4</sub> (35<sup>1</sup>/<sub>2</sub>, 39<sup>1</sup>/<sub>4</sub>, 43, 46<sup>1</sup>/<sub>4</sub>, 50<sup>1</sup>/<sub>4</sub>)"

Finished length to shoulder: 55.5 (57, 57.5, 59, 59.5, 60) cm/22<sup>3</sup>/<sub>4</sub> (22<sup>3</sup>/<sub>4</sub>, 23, 23<sup>1</sup>/<sub>2</sub>, 23<sup>3</sup>/<sub>4</sub>, 24)"

B - Length hem to underarm: 40 (41.5, 41.5, 41.5, 42, 42) cm/16 (16<sup>1</sup>/<sub>2</sub>, 16<sup>1</sup>/<sub>2</sub>, 16<sup>1</sup>/<sub>2</sub>, 16<sup>3</sup>/<sub>4</sub>, 16<sup>3</sup>/<sub>4</sub>)"

C - Yoke depth: 15.5 (15.5, 16, 17.5, 17.5, 18) cm/6<sup>1</sup>/<sub>4</sub> (6<sup>1</sup>/<sub>4</sub>, 6<sup>1</sup>/<sub>2</sub>, 7, 7, 7<sup>1</sup>/<sub>4</sub>)"

D - Waist circumference: 73.5 (82.5, 92.5, 102, 110, 120) cm/29<sup>1</sup>/<sub>2</sub> (33, 37, 40<sup>3</sup>/<sub>4</sub>, 44, 48)"

E - Cuff circumference: 23 (24.5, 27.5, 30, 32.5, 34) cm/9<sup>3</sup>/<sub>4</sub> (9<sup>3</sup>/<sub>4</sub>, 11, 12, 13, 13<sup>3</sup>/<sub>4</sub>)"

F - Upper arm circumference: 26.5 (29, 33.5, 38, 40.5, 42.5) cm/10<sup>3</sup>/<sub>4</sub> (11<sup>3</sup>/<sub>4</sub>, 13<sup>1</sup>/<sub>2</sub>, 15<sup>1</sup>/<sub>4</sub>, 16<sup>1</sup>/<sub>4</sub>, 17)"

G - Sleeve seam: 28.5 (30.5, 31, 31, 31, 31) cm/11<sup>1</sup>/<sub>2</sub> (12<sup>1</sup>/<sub>4</sub>, 12<sup>1</sup>/<sub>2</sub>, 12<sup>1</sup>/<sub>2</sub>, 12<sup>1</sup>/<sub>2</sub>, 12<sup>1</sup>/<sub>2</sub>)"

H - Neck circumference: 50.5 (54.5, 62.5, 71, 76, 79.5) cm/20<sup>1</sup>/<sub>4</sub> (21<sup>3</sup>/<sub>4</sub>, 25, 28<sup>1</sup>/<sub>2</sub>, 30<sup>1</sup>/<sub>2</sub>, 31<sup>3</sup>/<sub>4</sub>)"

Sweater shown in size M

### MATERIALS

Manos del Uruguay SILK BLEND (70% extrafine merino, 30% silk), 135m/148 yds per 50g/1.75 oz skein; and Manos del Uruguay MARINA (100% superwash merino), 800m/874 yds per 100g/3.5 oz skein

6 (7, 8, 9, 9, 10) skeins Silk Blend (MC) and 1 skein Marina (CC)

Shown in SB3214 Oxygen (MC) and MA0037 Arboretum (CC)

4mm/US 6 dpn and circular needles, 60cm/24" long, or size required to obtain tension

3.75mm/US 5 dpn and circular needles, 60cm/24" long

Cable needle

2 Stitch markers

Stitch holders or waste yarn

Tapestry needle

### TENSION

22 stitches and 38 rounds in Stocking St using MC on larger needles = 10cm/4" after blocking

### ABBREVIATIONS

**beg:** beginning

**C3B:** slip next 2 sts to cn and hold at back of work; k1 from LH ndl; k2 from cn

**C3F:** slip next st to cn and hold in front of work; k2 from LH ndl; k1 from cn

**CC:** contrast colour

**cn:** cable needle

**dec:** decrease

**dpn:** double-pointed needles

**inc:** increase

**k:** knit

**k2tog:** knit 2 sts together (1 st decreased)

**LH:** left hand

**M1L:** insert LH ndl under horizontal strand between st just worked and next st from the front to the back, k through the back loop (1 st increased)

**M1R:** insert LH needle under horizontal strand between st just worked and next st from the back to the front, k through the front loop (1 st increased)

**MC:** main colour

**ndl(s):** needle(s)

**p:** purl

**pm:** place marker

**rep:** repeat

**rnd(s):** round(s)

**sl:** slip

**slm:** slip marker

**ssk:** slip next 2 sts separately knitwise, inset LH ndl into front of 2 slipped sts and knit together (1 st decreased)

**St st:** Stocking st (working flat – RS: Knit, WS: Purl; working in the rnd – knit all rnds)

**st(s):** stitch(es)

**wyib:** with yarn in back

## PATTERN NOTES

This eye-catching yoke sweater is worked in the round from the bottom up, with colourwork cable accents at the hem, cuff and yoke. The hem and sleeve cuff begin with a folded hem. Waist shaping creates a well-fitting garment. The body is worked to the underarms then divided for front and back while sts for the underarm are placed on hold. The body is set aside while the sleeves are completed. All stitches are joined for back, front and sleeves to work the yoke, which has minimal shaping and finishes with a Garter st neckline.

## STITCH GUIDE

### Garter st

Rnd 1: Knit.

Rnd 2: Purl.

Rep these 2 rnds for pattern

### Chart A

Rnd 1: With MC, purl.

Rnds 2-5: With CC, \*k2, sl 1 purlwise wyib; rep from \* to end of rnd.

Rnd 6: With MC, \*C3B; rep from \* to end of rnd.

Rnd 7: With MC, purl.

Rnds 8-11: With CC, \*sl 1 purlwise wyib, k2; rep from \* to end of rnd.

Rnd 12: With MC, \*C3F; rep from \* to end of rnd.

Rnd 13: With MC, purl.

### Chart B

Rnd 1: With MC, purl.

Rnds 2-5: With CC, \*sl 1 purlwise wyib, k2; rep from \* to end of rnd.

Rnd 6: With MC, \*C3F; rep from \* to end of rnd.

Rnd 7: With MC, purl.

Rnds 8-11: With CC, \*k2, sl 1 purlwise wyib; rep from \* to end of rnd.

Rnd 12: With MC, \*C3B; rep from \* to end of rnd.

Rnd 13: With MC, purl.



## INSTRUCTIONS

### BODY

Using MC and smaller circular ndl, cast on 174 (195, 216, 237, 255, 276) sts. Join, being careful not to twist and pm to show beg of rnd.

*Inner Hem:*

Knit 8 rnds.

Turning Rnd: Purl.

*Outer Hem:*

Change to larger circular ndl.

Knit 8 rnds.

Work Rnds 1–13 of Chart A.

Knit 2 rnds.

Work Rnds 1–13 of Chart B.

Knit 2 rnds.

Work Rnds 1–13 of Chart A.

**Sizes S, L and XL only:**

Dec Rnd: K2tog, k- (96, -, 117, 126, -), pm, k to end. [- (194, -, 236, 254, -) sts]

**Sizes XS, M and 2X only:**

Next Rnd: K87 (-, 108, -, -, 138), pm, k to end.

**All sizes:**

*Shape Waist:*

Dec Rnd: \*K1, k2tog, k to 2 sts before marker, ssk, slm; rep from \* once more. [4 sts decreased]

Knit 9 (13, 13, 13, 13, 13) rnds.

Rep Dec Rnd.

Knit 9 (11, 11, 13, 13, 13) rnds.

Rep Dec Rnd once more. [162 (182, 204, 224, 242, 264) sts]

Knit 8 rnds.

Inc Rnd: \*K1, M1L, k to marker, M1R, slm; rep from \* once more. [4 sts increased]

Knit 29 rnds.

Rep Inc Rnd.

Knit 31 (31, 31, 29, 31, 31) rnds.

Rep Inc Rnd once more. [174 (194, 216, 236, 254, 276) sts]

Knit 8 rnds, ending last rnd 9 (10, 11, 12, 13, 14) sts before end of rnd.

*Divide Back and Front:*

Next Rnd: Cast off 18 (20, 22, 24, 26, 28) sts removing marker, k across Front to 9 (10, 11, 12, 13, 14) sts before marker, cast off 18 (20, 22, 24, 26, 28) sts removing marker. [69 (77, 86, 94, 101, 110) sts for each of Front and Back]

Keep MC attached and set Body aside while making Sleeves.

**SLEEVES (make 2)**

Using new ball of MC and smaller dpns, cast on 51 (54, 60, 66, 72, 75) sts. Join, being careful not to twist, and pm to show beg of rnd.

*Inner Hem:*

Knit 8 rnds.

Turning Rnd: Purl.

*Outer Hem:*

Switch to larger dpns.

Knit 8 rnds.

Work Rnds 1–13 of Chart B.

*Shape Sleeve:*

Inc Rnd: K1, M1L, k to end of rnd, M1R. [2 sts increased]

Knit 27 (21, 15, 11, 11, 11) rnds.

Rep the last 28 (22, 16, 12, 12, 12) rnds 0 (2, 1, 3, 3, 3) time(s), then rep Inc Rnd once more. [55 (62, 66, 76, 82, 85) sts]

Knit 25 (19, 13, 9, 9, 9) rnds.

Rep Inc Rnd.

Rep the last 26 (20, 14, 10, 10, 10) rnds 1 (0, 3, 3, 3, 3) time(s). [59 (64, 74, 84, 90, 93) sts]

Knit 8 rnds, ending last rnd 9 (10, 11, 12, 13, 14) sts before end of rnd.

*Divide for underarm:*

Cast off 18 (20, 22, 24, 26, 28) sts. [41 (44, 52, 60, 64, 65) sts]

Break MC.

**JOIN FOR YOKE**

Using MC attached to Back sts and larger circular ndl, pm to show beg of rnd, k69 (77, 86, 94, 101, 110) Back sts, k across 41 (44, 52, 60, 64, 65) Left Sleeve sts, k69 (77, 86, 94, 101, 110) Front sts, k across 41 (44, 52, 60, 64, 65) Right Sleeve sts. [220 (242, 276, 308, 330, 350) sts]

Knit 1 rnd, dec 1 (2, 0, 2, 0, 2) sts evenly around. [219 (240, 276, 306, 330, 348) sts]

Knit 3 (5, 7, 10, 11, 13) rnds.



Work Rnds 1–13 of Chart A.

Knit 2 rnds.

Work Rnds 1–13 of Chart B.

Dec Rnd 1: [K3, k2tog] 3 (0, 0, 6, 6, 0) times, \*k2, k2tog; rep from \* to end of rnd. [165 (180, 207, 231, 249, 261) sts]

Knit 1 rnd.

Work Rnds 1–13 of Chart A.

Dec Rnd 2: [K2, k2tog] 3 (0, 0, 6, 6, 3) times, \*k1, k2tog; rep from \* to end of rnd. [111 (120, 138, 156, 168, 175) sts]

Work in Garter st for 2.5cm/1".

Cast off all sts loosely.

## FINISHING

Join underarm seams. Fold hem and cuff inside at turning rnd and stitch in place. Weave in ends and block to measurements.

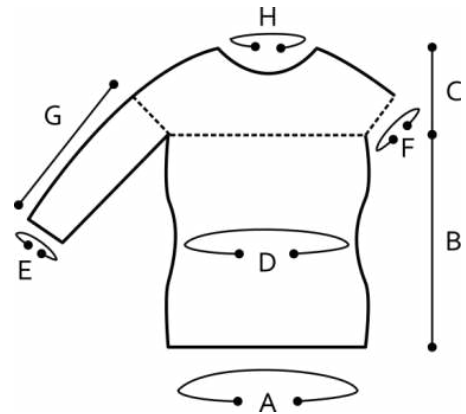


Chart A

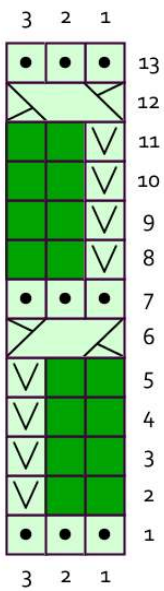
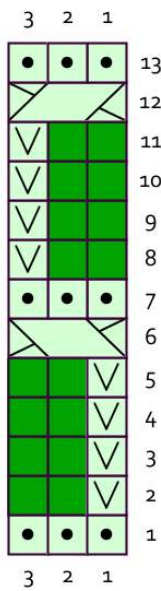


Chart B



Key

