



MANOS DEL URUGUAY

FREE PATTERN



UK VERSION

Maple Scarf

by Jennie Atkinson

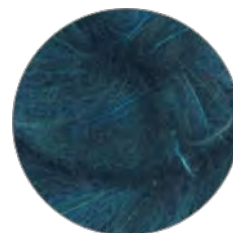


Pattern uses **Manos Cabrito**
Shown in CR7056 Autumn

Other suggested colours to
choose from:



CR6966 Tiza



CR7164 Ultramarine



CR8931 Wildflowers



MANOS DEL URUGUAY

See www.roosteryarns.com
for more colours in the Manos
Cabrito range.

This soft and pretty scarf uses a diamond lace motif that is repeated at a smaller scale to create a deep border at each end.

SIZE (after light blocking)

Width: 21cm (8 1/4in)

Length: 180cm (72in)

MATERIALS

Manos del Uruguay CABRITO (80% Kid Mohair, 20%

Polyamide), approx 210m/230yds per 45g,

2 x 25g hanks

Shown in Colour CR7056 Autumn

3.25mm (US #3) needles, or size needed to obtain correct tension

Tapestry Needle

TENSION

26sts and 40 rows in 10cm (4in) using 3.25mm (US size 3) needles and lace patt.

ABBREVIATIONS

K: knit

k2tog: knit 2 stitches together

p: purl

p2tog: purl 2 stitches together

patt: pattern

RS: right side

Ssk: slip, slip, knit

st(s): stitch(es)

st st: stocking stitch

tbl: through back loop

tog: together

yo: yarn over

WS: wrong side

[]: work sequence in square brackets number of times indicated

NOTE

The scarf is made in two sections that are grafted in the centre, which makes both ends identical. If you don't want to graft you can make it in one piece by continuing to work past the centre point and reversing the sequence of charts and repeats.

INSTRUCTIONS

Scarf section (make 2)

Using 3.25mm (US size 3) needles cast on 47 sts.

Work two rows in garter st.

Row 1 of lace patt: K3, work Row 1 of chart 1, k1, yo, k2tog.

Row 2 of lace patt: K3, work Row 2 of chart 1, k1, yo, k2tog.

These two rows set edging patt and chart position.

Keeping edging patt as set throughout.

Work five reps of Rows 1–8 of Chart 1 in total.

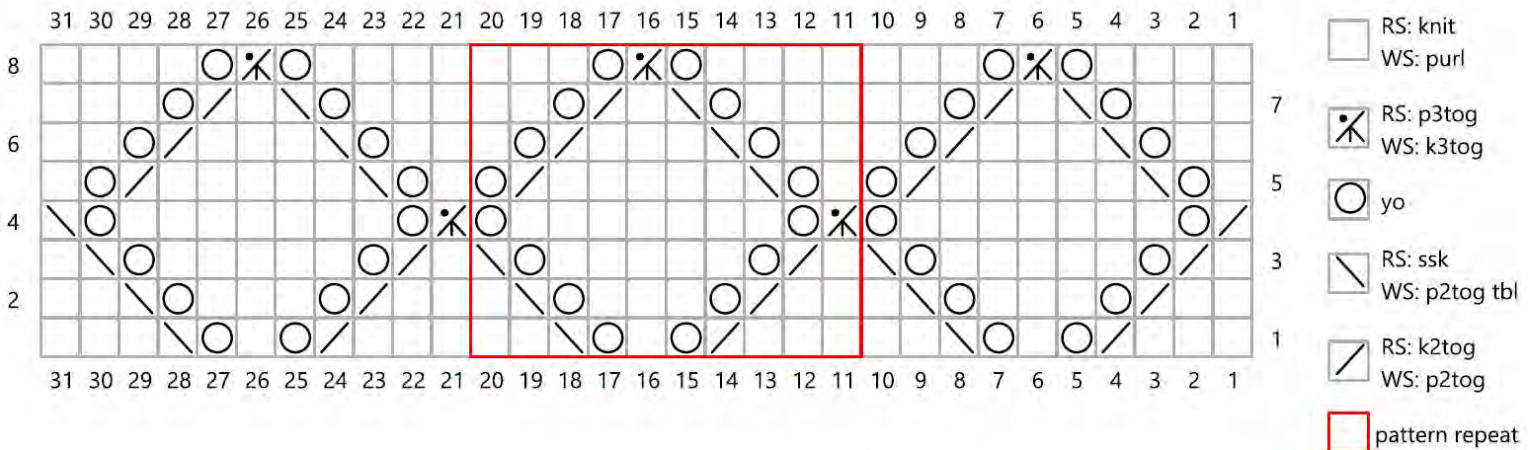
Work Rows 1–4 of Chart 2 once.

Work 3 reps of Rows 1–18 of Chart 3.

Work Rows 1–10 of Chart 4 once.

Work 5 reps of Rows 1–38 of Chart 5 and then Row 39 once.

Chart 1



Graft sections together

Return each section to a needle each so that when sections are placed WS to WS the points of needles are both to the right.

Working over a flat surface, thread long tail of yarn to the right into a tapestry needle.

Start graft: Pass tapestry needle purlwise through first stitch on nearer needle, draw yarn through stitch. Pass tapestry needle knitwise through first stitch on second needle. Draw yarn through.

Grafting sequence

1 Pass tapestry needle knitwise through first stitch on nearer needle, drop stitch off needle. Draw yarn through.

2 Pass tapestry needle purlwise through next (now first) stitch on nearer needle, draw yarn through stitch. Leave stitch on needle.

3 Pass tapestry needle purlwise through first stitch on second needle, drop stitch off needle. Draw yarn through.

4 Pass tapestry needle knitwise through next (now first) on second needle. Draw yarn through. Leave stitch on needle. Rep these 4 steps until all stitches are joined, taking care to pull yarn through gently to create a flat, smooth join. Fasten off.

To complete

Block scarf to desired size.

Weave in ends.

Chart 2

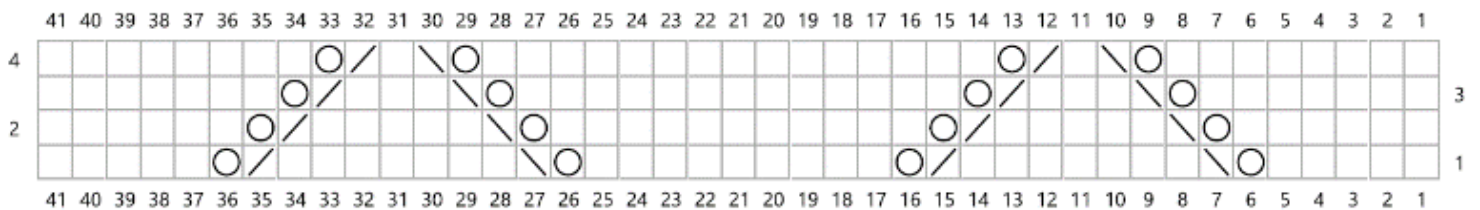


Chart 3

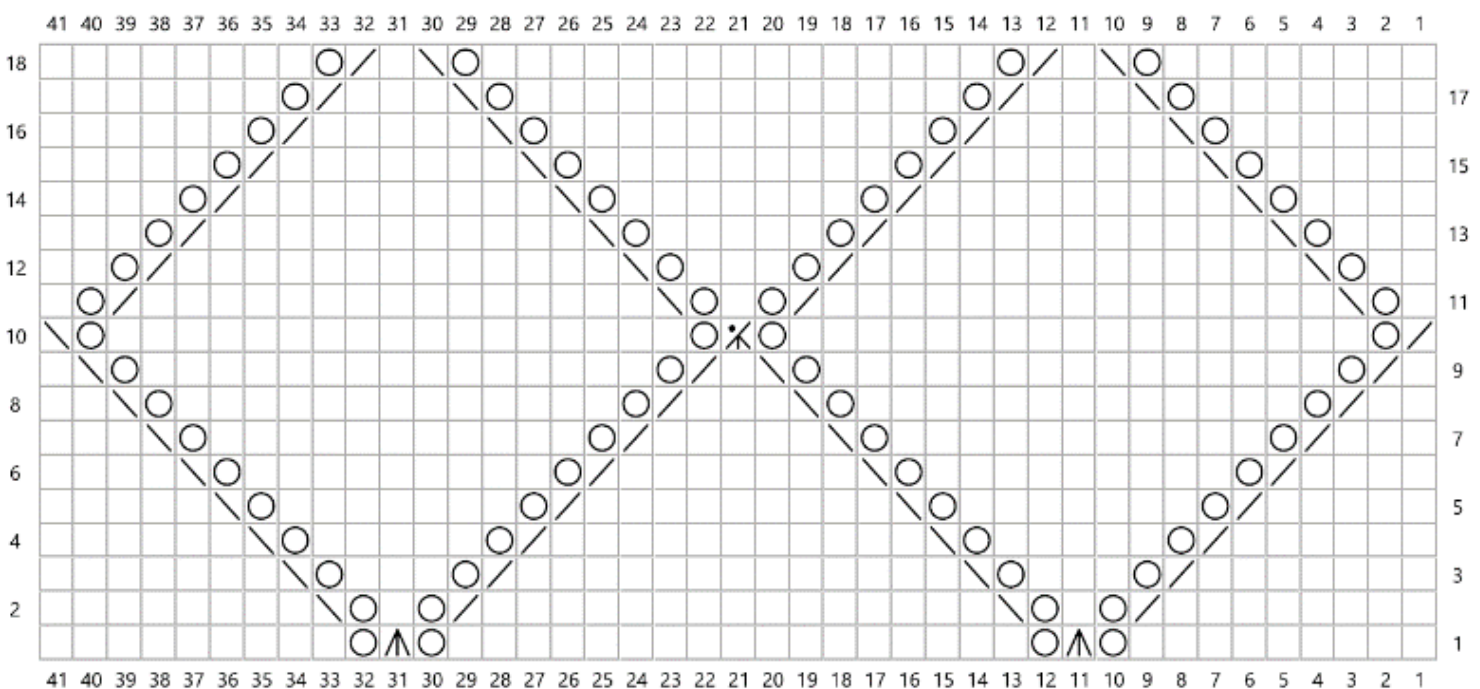


Chart 4

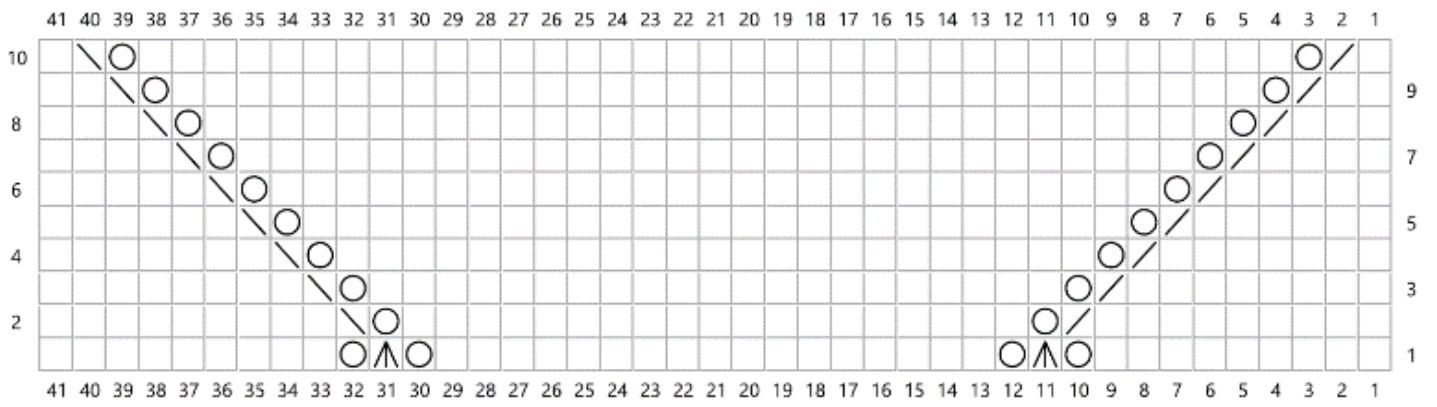


Chart 5

