



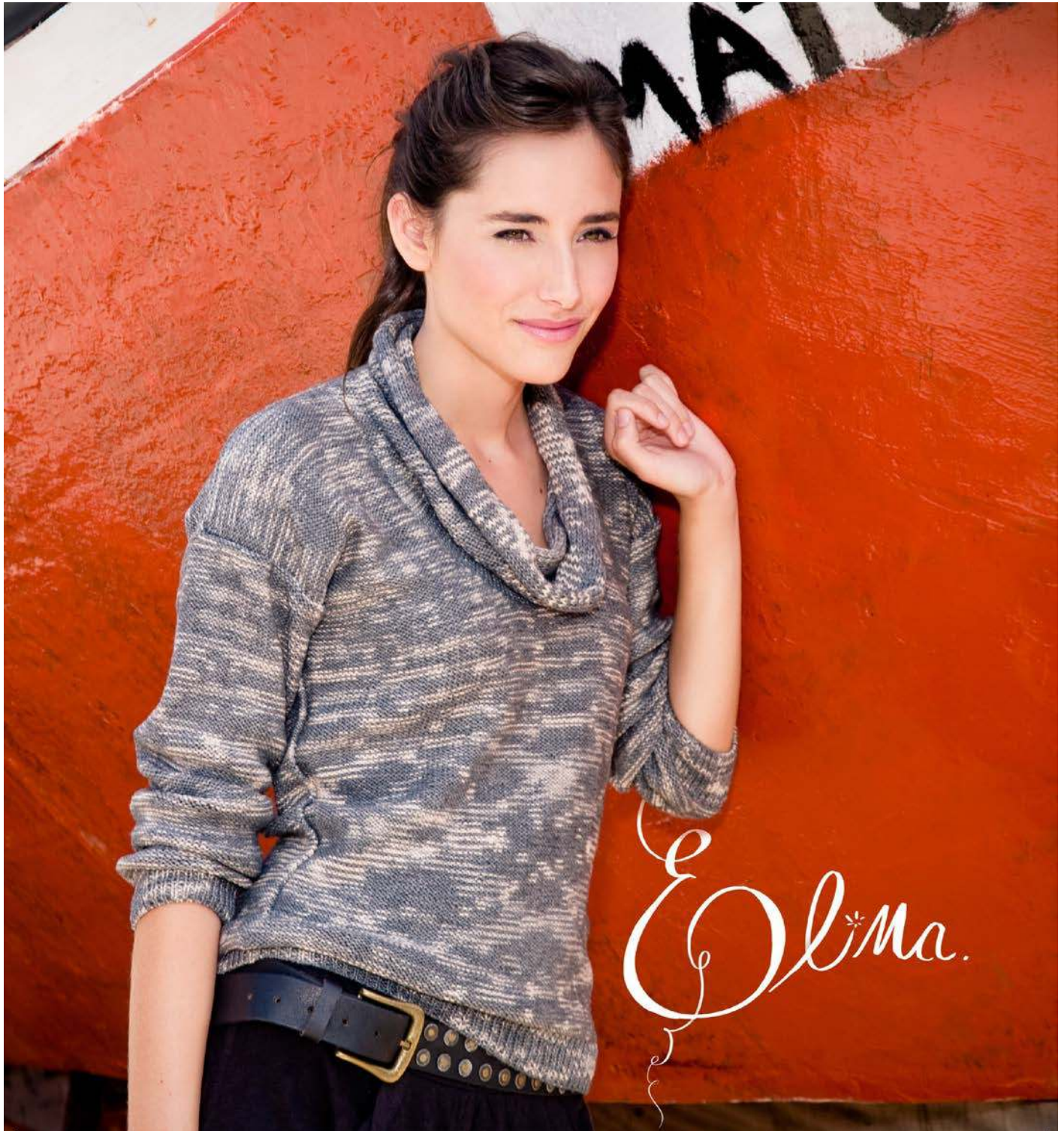
MANOS DEL URUGUAY

FREE PATTERN



Elina

by Manos Del Uruguay Design Team



Pattern uses **Manos Serena**
Shown in #7311 Zebra



MANOS DEL URUGUAY

See www.roosteryarns.com for
more colours in the Manos
Marina range.

SIZE

Finished bust measurements: 36 (40, 44)in

MATERIALS

Manos del Uruguay Serena (60% baby alpaca, 40% pima cotton; approx. 170yds / 50g)

8 (9, 9) x 50g skeins

Shown in S7311 Zebra

3.5mm (US #4) and 3.75mm (US #5) needles, or size needed to obtain gauge

Stitch markers

TENSION

25 sts and 32 rows in 10cm square over Rev St st

ABBREVIATIONS

BO: Cast off

CO: Cast on

k: knit

k2tog: knit 2 stitches together (1 stitch dec'd)

inc: increase

ndl(s): needle(s)

p: purl

psso: pass slipped stitch over k2tog stitch

rem: remain(s), remaining

rep: repeat(s), repeating

rnd(s): round(s)

RS: right side

sl: slip

st(s): stitch(es)

St st: stocking stitch

WS: wrong side

W&T: Sl next st purlwise, bring yarn to front of work (if knit-ting) or to back of work (if purling), sl st back to LH ndl, turn work around.

STITCH GUIDE

1x1 RIB (odd number of sts)

Row 1 (RS): k1, *p1, k1, rep from * to end of row. Row 2 and all other rows: Work sts as they appear.

INSTRUCTIONS

Back

With smaller needles, CO 103 (113, 125) sts. Work in 1x1 Rib for 3.5cm (1½in). Change to Rev St st. When work measures 10cm (4in), inc 1 st each end of next RS and every following 16th row a total of 6 times. [115 (125, 137) sts]

Work even until piece measures 40cm (16in); mark each end of this row for armhole.

When piece measures 42cm (16½in), inc 1 st each end of next row, and again 10 rows later. [119 (129, 141) sts]

Work even until piece measures 60 (60, 61)cm [23½ (23½, 24)in], ending with a WS row.

Shape Shoulders and Back Neck

BO 13 (15, 17) sts, p until there are 33 (36, 40) sts on right needle, join second ball of yarn and BO center 27 sts, p to end. Continue to work both shoulders at same time with separate balls of yarn.

BO 13 (15, 17) sts at the beginning of the next 3 (5, 5) rows, then 14 (0, 0) sts at the beginning of the next 2 (0, 0) rows, and AT THE SAME TIME, BO at each side of neck edge 4 sts once and then 2 sts once. No sts remain.

Front

Work same as Back until there are 113 (123, 135) sts and piece measures 37.5cm (14¾in), ending with a WS row. Continue with side increases and marking for armhole, and AT THE SAME TIME shape neck: p 49 (54, 60) sts, join second ball of yarn and BO center 15 sts, p to end. Continue to work both sides at same time with separate balls of yarn, BO at each side of neck edge 3 sts once and 2 sts twice, then dec 1 st at each neck edge on every RSR 5 times. 40 (45, 51) sts remain on each side after all shaping is complete.

Work even until piece measures 60 (60, 51)cm [23½ (23 ½, 24)in]. BO 13 (15, 17) sts at the beginning of the next 4 (6, 6) rows, then 14 (0, 0) sts at the beginning of the following 2 (0, 0) rows.

Sleeves (make 2)

With smaller needles, CO 65 sts. Work in 1x1 Rib for 3.75cm (1½in). Change to Rev St st. When work measures 6.25cm (2½in), inc 1 st each end of next and every following 8th row a total of 13 (13,16) times. [91 (91, 97) sts]. Work even until piece measures 46 (46, 47) [18 (18, 18 ½)in]. BO loosely.

Collar

With larger needles, CO 46 sts. Work in Rev St st for 26 (26, 27)in. Bind off.

Finishing

Sew shoulder seams. Sew collar into a tube by sewing CO edge to BO edge, then set into neck opening with purl side

outward. Sew BO edge of sleeves between marked points at armhole. Sew side and sleeve seams. Weave in ends. Block lightly.

