



MANOS DEL URUGUAY

FREE PATTERN



# Feroe Shawl

by Lisa R Myers



Pattern uses **Manos Marina**  
Shown in #7338 Denim

Other suggested colours to  
choose from:



0037 Arbetorum



6958 Grappe Stain



9952 Calypso



9294 Fresias

See [www.roosteryarns.com](http://www.roosteryarns.com) for  
more colours in the Manos  
Marina range.



MANOS DEL URUGUAY

## SIZE

Finished Length: 200cm long and 70cm wide at deepest point

## MATERIALS

Manos Del Uruguay Marina (100% Superwash Merino wool, 800m/874yds per 100g),

2 x 100g hanks

Shown in #7338 Denim

4mm (US #6) 80cm circular needles, or size to obtain tension

Stitch markers

Tapestry needle

## ABBREVIATIONS

**CO:** cast on

**decr:** decrease

**k:** knit

**k2tog:** knit 2 stitches together

**m:** marker

**pm:** place marker

**rep:** repeat

**RS:** right side

**s2kp:** slip 2 stitches together knitwise, k1, pass slipped stitches over (2 stitches decreased)

**sk2p:** slip 1, knit 2 together, pass slipped stitch over (2 stitches decreased)

**sm:** slip marker

**ssk:** slip 2 stitches, 1 at a time, knitwise to the right needle.

Return stitches to the left needle in turned position then knit them together through the back loops

**st(s):** stitches

**tbl:** through the back loop

**WS:** wrong side

**yo:** yarn over



## STITCH GUIDE

### *Kitchener Stitch*

**Step 1:** Bring threaded tapestry needle through first stitch on front needle as if to purl and leave stitch on needle.

**Step 2:** Bring threaded tapestry needle through first stitch on back needle as if to knit and leave stitch on needle.

**Step 3:** Bring threaded tapestry needle through first stitch on front needle as if to knit and slip this stitch off needle, then bring tapestry needle through next stitch on front needle as if to purl and leave stitch on needle.

**Step 4:** Bring threaded tapestry needle through first stitch on back needle as if to purl and slip this stitch off needle, then bring tapestry needle through next stitch on back needle as if to knit and leave stitch on needle.

Repeat Steps 3 and 4 until no stitches remain on needles.

## INSTRUCTIONS

CO 433 sts.

Knit 11 rows.

Next Row (WS): K5, purl to last 5 sts, k5.

Decr Row: K4, ssk, knit to last 6 sts, k2tog, k4. [431 sts remain]

Work 1 WS row even as established.

Work Rows 1–42 of Chart [389 sts remain]

Set-up Row (RS): K4, ssk, k177, pm, k23, pm, k177, k2tog, k4. [387 sts remain]

Next row (WS): K5, purl to last 5 sts, k5.

Decr Row 1 (RS): K4, ssk, knit to 2 sts before m, k2tog, sm, knit to next m, sm, ssk, knit to last 6 sts, k2tog, k4. [4 sts decreased]

Work 1 WS row even as established.

Rep the last 2 rows 37 more times, [235 sts remain; 23 sts between markers and 106 sts on each side of markers]

Decr Row 2 (RS): K4, ssk, [k3, k2tog] to m, sm, k4, ssk, k11, k2tog, k4, sm, [ssk, k3] to last 6 sts, k2tog, k4. [191 sts remain; 21 sts between markers and 85 sts on each side of markers]

Work 1 WS row even as established. Rep Decr Row 1. [4 sts decreased]

Rep the last 2 rows once more, then work 1 WS row even as established. [183 sts remain; 21 sts between markers and 81 sts on each side of markers]

Decr Row 3 (RS): K4, ssk, knit to 2 sts before m, k2tog, k4, ssk, knit to 6 sts before m, k2tog, k4, ssk, knit to last 6 sts, k2tog, k4. [6 sts decreased; 177 sts remain; 19 sts between markers and 79 sts on each side of markers]

Work 1 WS row even as established. Rep Decr Row 1. [4 sts decreased]

Rep the last 2 rows once more, then work 1 WS row even as established. [169 sts remain; 19 sts between markers and 75 sts on each side of markers]

Rep Decr Row 3. [163 sts remain; 17 sts between markers and 73 sts on each side of markers]  
Work 1 WS row even as established

Decr Row 4 (RS): K4, ssk, k1, [k1, k2tog] to m, sm, knit to next m, sm, [ssk, k1] to last 7 sts, k1, k2tog, k4. [117 sts remain; 17 sts between markers and 50 sts on each side of markers]

Work 1 WS row even as established.

Rep Decr Row 1. [113 sts remain; 17 sts between markers and 48 sts on each side of markers]

Work 1 WS row even as established.

Rep Decr Row 3. [107 sts remain; 15 sts between markers and 46 sts on each side of markers]

Work 1 WS row even as established. Rep Decr Row 1. [4 sts decreased]

Rep the last 2 rows once more, then work 1 WS row even as established. [99 sts remain; 15 sts between markers and 42 sts on each side of markers]

Rep Decr Row 3. [93 sts remain; 13 sts between markers and 40 sts on each side of markers]

Work 1 WS row even as established. Rep Decr Row 1. [4 sts decreased]

Rep the last 2 rows once more, then work 1 WS row even as established. [85 sts remain; 13 sts between markers and 36 sts on each side of markers]

Decr Row 5 (RS): K4, ssk, [k1, k2tog] to m, sm, k4, ssk, k1, k2tog, k4, sm, [ssk, k1] to last 6 sts, k2tog, k4. [61 sts remain; 11 sts between markers and 25 sts on each side of markers]

Work 1 WS row even as established. Rep Decr Row 1. [4 sts decreased]

Rep the last 2 rows once more, then work 1 WS row even as established. [53 sts remain; 11 sts between markers and 21 sts on each side of markers]

Decr Row 6 (RS): K4, ssk, [k1, k2tog] to m, sm, k4, s2kp, k4, sm, [ssk, k1] to last 6 sts, k2tog, k4. [39 sts remain; 9 sts between markers and 15 sts each side of markers] Work 1 WS row even as established.

Decr Row 7 (RS): K4, ssk, k7, k2tog, remove marker, k9, remove marker, ssk, k7, k2tog, k4. [35 sts remain] Work 1 WS row even as established.

Decr Row 8 (RS): K4, [ssk, k5, k2tog] 3 times, k4. [29 sts remain]

Work 1 WS row even as established.

Decr Row 9 (RS): K4, [ssk, k3, k2tog] 3 times, k4. [23 sts remain]

Work 1 WS row even as established.

Decr Row 10 (RS): K4, [ssk, k1, k2tog] 3 times, k4. [17 sts remain]

Work 1 WS row even as established.

Decr Row 11 (RS): K5, k2tog, s2kp, ssk, k5. [13 sts remain] Work 1 WS row even as established.

Decr Row 12 (RS): K5, s2kp, k5. [11 sts remain] Decr

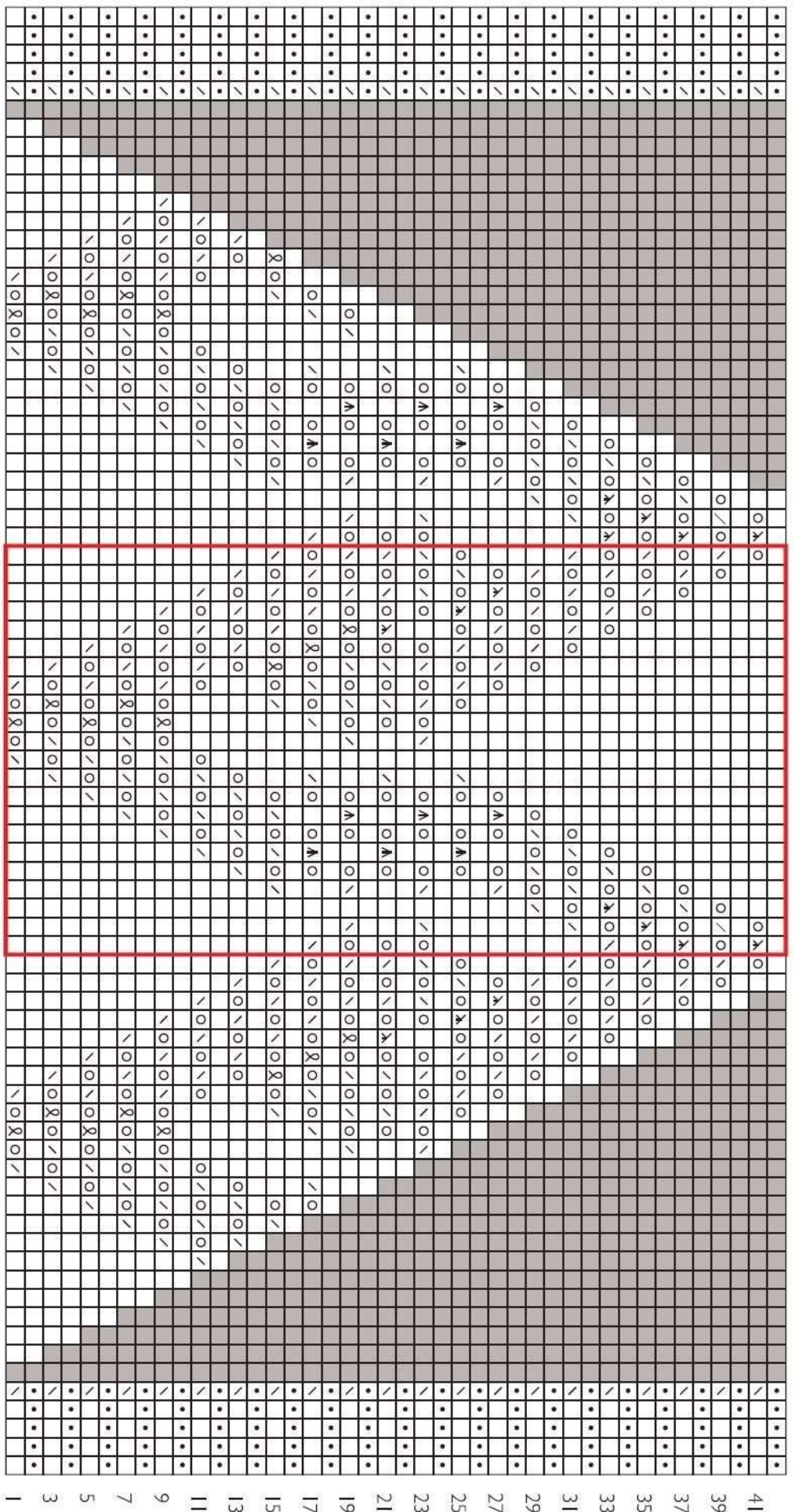
Row 13 (WS): K5, k2tog, k4. [10 sts remain]

Next Row (RS): K5; cut yarn, leaving 45cm tail. Fold work so needles are parallel with points facing to the right. Thread tail onto tapestry needle and use the Kitchener st to graft remaining sts to one another.

### *Finishing*

Weave in ends. Wet-block to finished measurements.





- knit on RS, purl on WS
- purl on RS, knit on WS
- yo
- k1-tbl

- k2tog
- sk
- s2kp
- sk2p

- no stitch
- pattern repeat

1  
3  
5  
7  
9  
11  
13  
15  
17  
19  
21  
23  
25  
27  
29  
31  
33  
35  
37  
39  
41