

PIERROT VEST

by Cecilia Lalanne



MANOS
DEL URUGUAY
— EST. 1968 —



Pierrot Vest

by Cecilia Lalanne

The little cute Pierrot Vest has a boxy simple shape and a fun graphic motif.

It is a great way to get started in intarsia knitting as it is simple and fast to knit.

The Pierrot Vest is knitted flat from bottom up in our bulky yarn Cardo.

Finished Measurements

Sizes - (1) 2 (3)

Bust circumference - (41) 49 (56.5)" / (104) 124 (144)



Yarn and Quantities

Cardo by Manos del Uruguay.

(100% corriedale), approx. 109 yds / 100 mts per 100 g

Quantities:

Color A: Pumpkin, (1) 3 (3)

Color B: Love Potion (1) 2 (2)

Color C: Spirulina (1) 1 (1)

Color D: Concord (1) 1 (1)

Color E: Cirrus (1) 2 (2)



Needles and Tools

- One pair of straight needles in size 8,0 mm / #11 US. (Or size to obtain gauge)

- One pair of straight needles in size 6,0 mm / #10 US. (Or size to obtain gauge)

- Circular knitting 6,0 mm / #10 US (to knit the ribs)

- 1 tapestry needle.

Gauge

12.5 sts and 16 rows = 4" [10 cm] with 8,0 mm / #11 US needles, in stockinette stitch (intarsia), after blocking.

Abbreviations

K- Knit.

P- Purl.

RS- Right Side.

WS- Wrong Side.

St/Sts- Stitch/Stitches.

k3tog tbl- Knit 3 stitches together through the back loop.

k3tog - Knit 3 stitches together

B.O.: Bind off

Instructions

We will work back and forth, knitting the front and back separately, then we'll sew both parts and finally we'll knit the rib for the neck and armholes.

Front and back are worked with intarsia in stockinette stitch, following two different intarsia charts.

BACK

With A color (Pumpkin), using 6,0 mm / #10 US needles, cast on (65) 77 (89) sts.

Row 1: (k1, p1) to 1 st. before the end, k1.

Row 2: (p1, k1) to 1 st. before the end, p1.

Work these 2 rows until piece measures 2.7" (7,0 cms) from the cast on edge.

Change to 8,0 mm / #11 US needles.

From here we start to work (in stockinette stitch) the intarsia chart for each size until you have knitted a total of (30) 36 (40) rows. (not including the rib rows)

Armholes Shape

The armhole shape is worked as we continue knitting with the intarsia of the graphic.

Row 1 (RS): Bind off (3) 4 (5) sts, knit to the end of the row.

Row 2 (WS): Bind off (3) 4 (5) sts, purl to the end of the row.

Row 3 (RS): Bind off 2 sts, knit to the end of the row.

Row 4 (WS): Bind off 2 sts, purl to the end of the row.

Row 5 (RS): Bind off 1 st, knit to the end of the

row.

Row 6 (WS): Bind off 1 st, purl to the end of the row.

ONLY FOR SIZE 2 and 3

Next Row (RS): Bind off 1 st, knit to the end of the row.

Next Row (WS): Bind off 1 st, purl to the end of the row.

Now you have (53) 61 (71) sts on the needles.

Next Row (RS) (Decreasing): K2, k3tog tbl, knit until last 5 sts, k3tog, k2.

Next Row (WS): Purl.

Repeat these 2 rows (2) 3 (4) more times.

Now you have (41) 45 (51) sts on the needles.

Continue working the intarsia chart (in stockinette stitch) for each size until you have knitted a total of (66) 76 (84) rows. (not including the rib rows)

Neck and Shoulders

Row 1 (RS): B.O. 1st., knit to the end of the row.

Row 2 (WS): B.O. 1st., purl to the end of the row.

Repeat these 2 rows 1 more time.

Next Row (RS): B.O. 1 sts, k8, B.O. (17) 21 (27) sts., knit to the end of the row.

Keep the stitches from the right shoulder on holding and continue working only on the **LEFT SHOULDER** stitches as follow:

Row 1 (WS): B.O. 1st., purl to the end of the

row.

Row 2 (RS): B.O. 3 sts, knit to the end of the row.

Row 3 (WS): B.O. 2 sts., purl to the end of the row.

Now you have 4 sts. on your needles

Bind off and cut yarn.

Place **RIGHT SHOULDER** stitches back on the needle, continue working on the WS as follow:

Row 1 (WS): BO 3 sts, purl to the end of the row.

Row 2 (RS): B.O. 2 sts, knit to the end of the row.

Row 3 (WS): Purl.

Now you have 4 sts. on your needles

FRONT

With A color (Pumpkin), using 6,0 mm / #10 US needles, cast on (65) 77 (89) sts.

Row 1: (k1, p1) to 1 st. before the end, k1.

Row 2: (p1, k1) to 1 st. before the end, p1.

Work these 2 rows until piece measures 2.7" (7,0 cms) from the cast on edge.

Change to 8,0 mm / #11 US needles

From here we start to work (in stockinette stitch) the intarsia chart for each size until you have knitted a total of (30) 36 (40) rows. (not including the rib rows)



Armholes Shape

The armhole shape is worked as we continue knitting with the intarsia of the graphic.

Row 1 (RS): Bind off (3) 4 (5) sts, knit to the end of the row.

Row 2 (WS): Bind off (3) 4 (5) sts, purl to the end of the row.

Row 3 (RS): Bind off 2 sts, knit to the end of the row.

Row 4 (WS): Bind off 2 sts, purl to the end of the row.

Row 5 (RS): Bind off 1 st, knit to the end of the row.

Row 6 (WS): Bind off 1 st, purl to the end of the row.

ONLY FOR SIZE 2 and 3

Next Row (RS): Bind off 1 st, knit to the end of the row.

Next Row (WS): Bind off 1 st, purl to the end of the row.

FOR ALL SIZES

Next Row (RS) (Decreasing): K2, k3tog tbl, knit until last 5 sts, k3tog, k2.

Next Row (WS): Purl.

Repeat these 2 rows (2) 3 (4) more times.

Now you have (41) 45 (51) sts on the needles.

Continue working the intarsia chart (in stockinette stitch) for each size until you have knitted a total of (62) 74 (78) rows. (not including the rib rows)

Neck and Shoulders

Row 1 (RS): K 17, B.O. (7) 11 (17) sts., knit to the end of the row.

Keep the stitches from the left shoulder on holding and continue working only on the **RIGHT SHOULDER** stitches as follow:

Row 2 (WS): Purl.

Row 3 (RS): B.O. 3 sts., knit to the end of the row.

Row 4 (WS): Purl.

Row 5 (RS): B.O. 2 sts., knit to the end of the row.

Row 6 (WS): Purl.

Repeat last 2 rows 1 more time.

Row 9: B.O. 1 st., knit to the end of the row.

Row 10: B.O. 1 st., purl to the end of the row.

Repeat last 2 rows 2 more times.

Now you have 4 sts. on your needles

Bind off and cut yarn.

Place **LEFT SHOULDER** stitches back on the needle, continue working on the WS as follow:

Row 1 (WS): BO 3 sts, purl to the end of the row.

Row 2 (RS): Knit.

Row 3 (WS): BO 2 sts, purl to the end of the row.

Row 4 (RS): Knit.

Repeat last 2 rows 1 more time.

Row 7 (WS): BO 1 st, purl to the end of the row.

Row 8 (RS): Knit.

Repeat last 2 rows 2 more times.

Now you have 4 sts. on your needles

Bind off and cut yarn.

Join front and back

After having both pieces knitted (front and back), join them with Mattress Stitch for the sides and with a crochet chain for the shoulders.

IMPORTANT: The sides sew it will be done half stitch from the edge.

Reference video for mattress stitch:

<https://www.youtube.com/watch?v=ObuZWHImDCI&t=114s>

Reference video for crochet chain:

<https://www.youtube.com/watch?v=VDjX4NUZpEI>

Neckline and Armhole rib

After joining both pieces we are going to pick up, with the circular needle, an even number of stitches (on both armholes, and neckline), as follows:

With the RS towards us, using 6,0 mm / #10 US needles:

Pick up 2 stitches every 3 stitches.

After picking up all stitches, knit 1x1 rib (k1, p1) for 6 rows.

Bind off with a tubular bind off for 1x1 rib

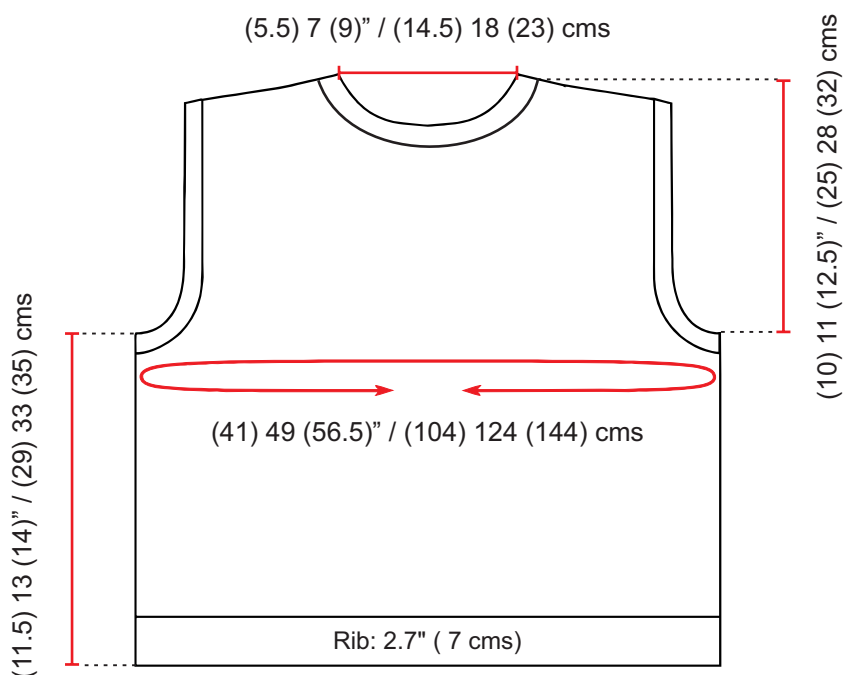
Reference video for tubular bind off:

<https://www.youtube.com/watch?v=2c94VA0oxdo&t=5s>

IMPORTANT: This ratio of stitches in the pick up depends on the gauge with which we are working, therefore it can vary for each particular case. If required, it is recommended to do the calculation for each specific case. Reference video for picking up stitches at collar and armhole:

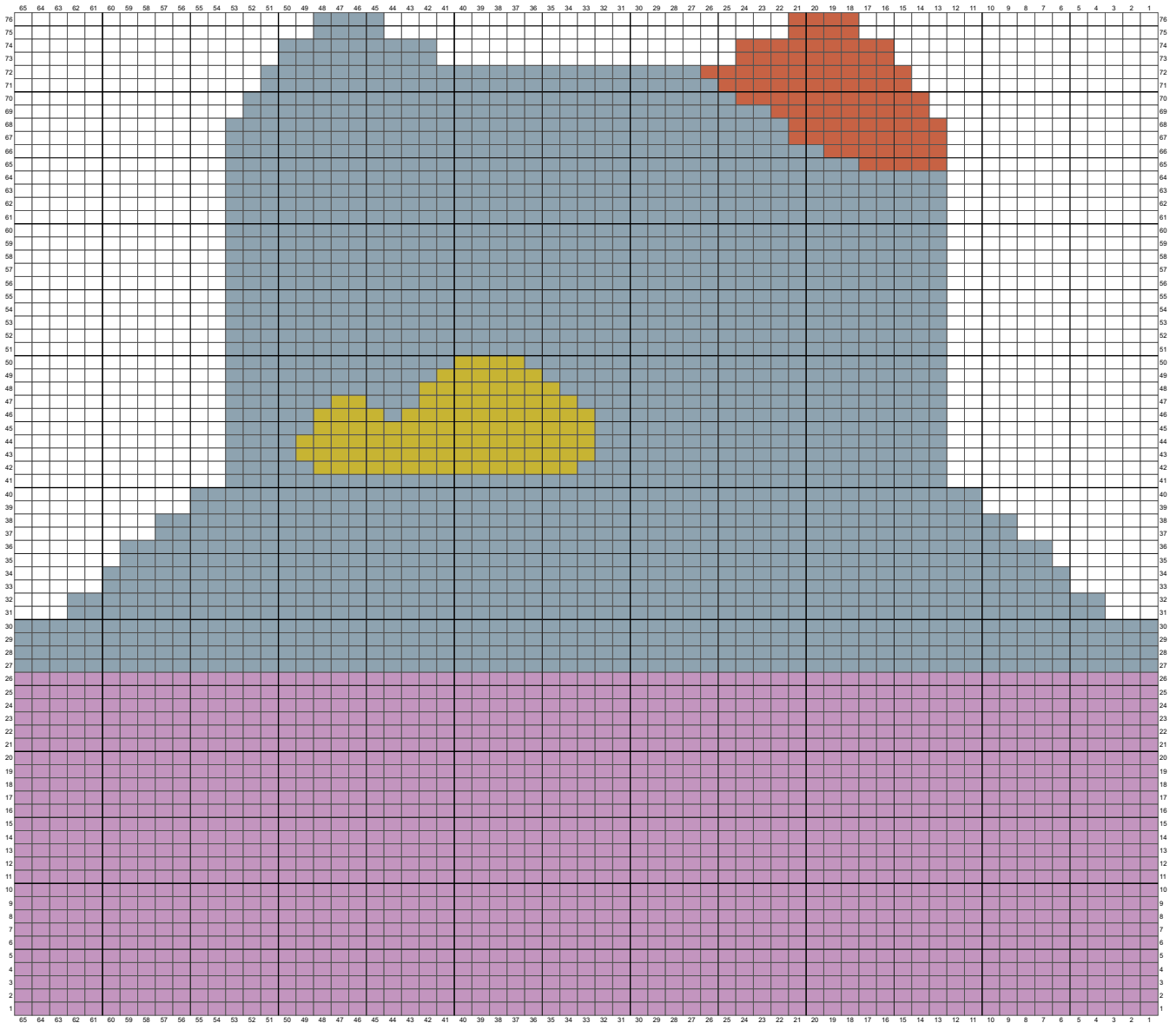
<https://www.youtube.com/watch?v=9A1ateS95qY&t=559s>

MEASURES



CHARTS

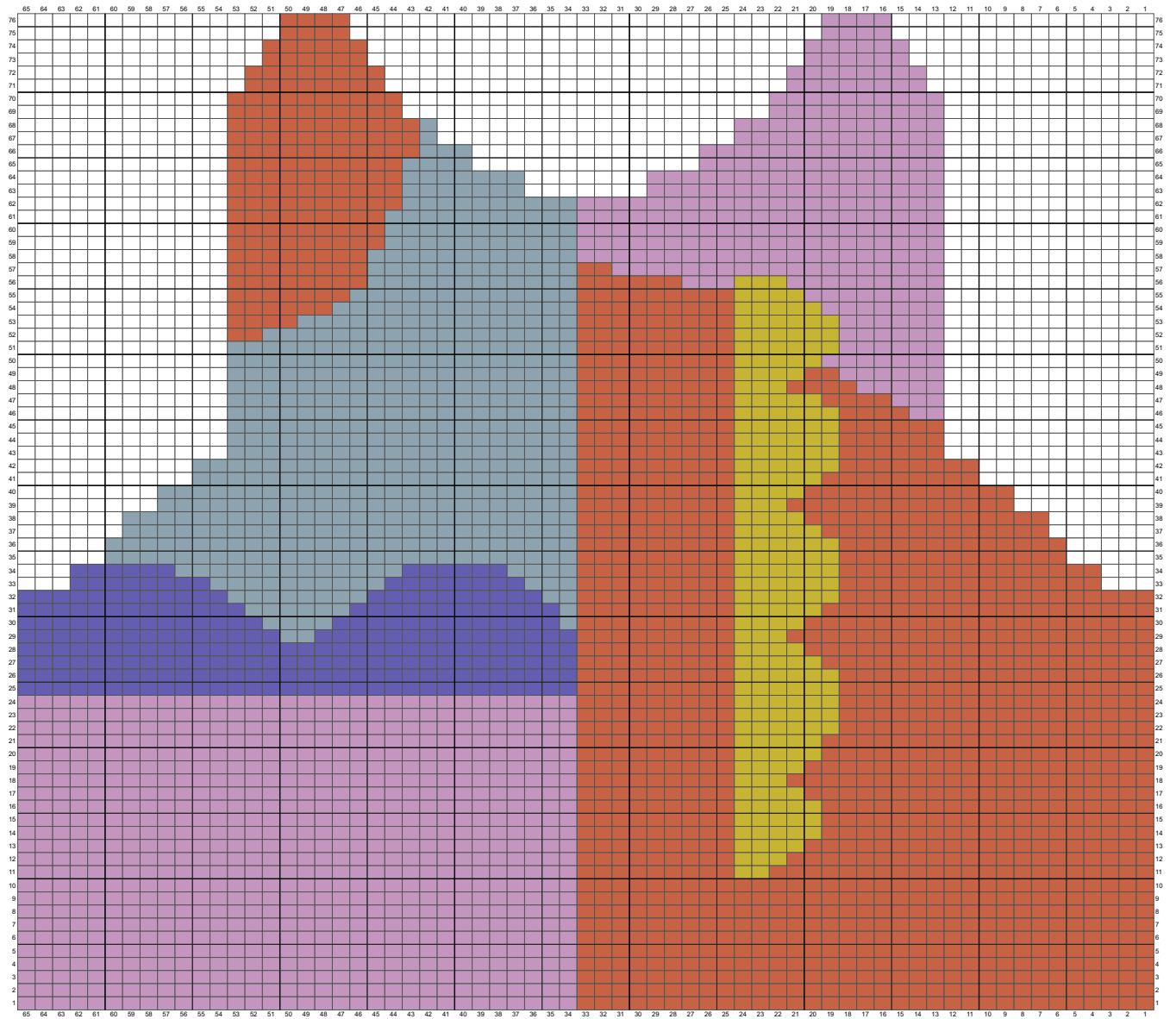
Size 1 - Back



- No stitch
- Spirulina
- Very Vivid
- Pleach Blossom
- Nymph
- Pumpkin
- Circus

CHARTS

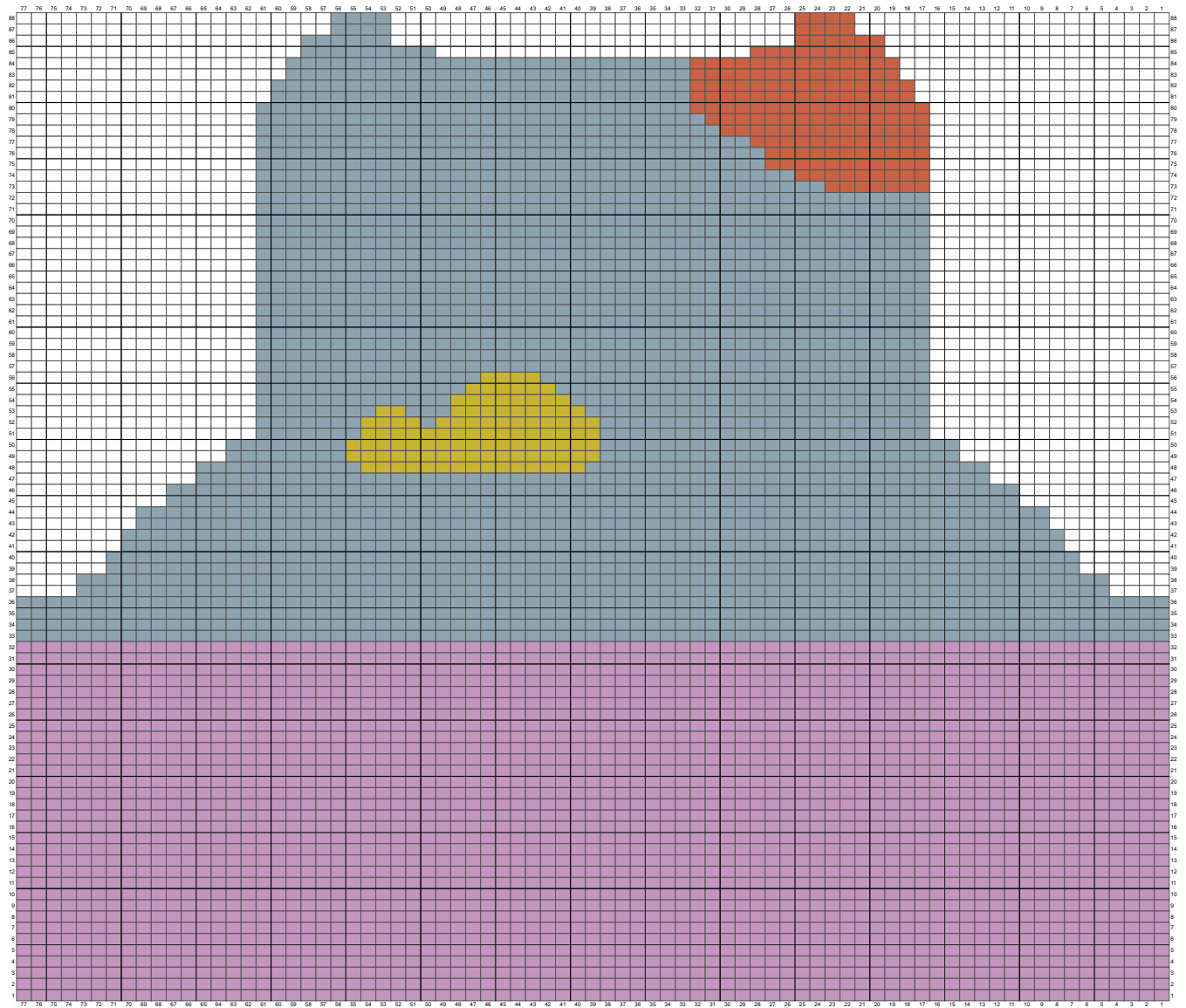
Size 1 - Front



- No stitch
- Spirulina
- Very Vivid
- Pleach Blossom
- Nymph
- Pumpkin
- Cirrus

CHARTS

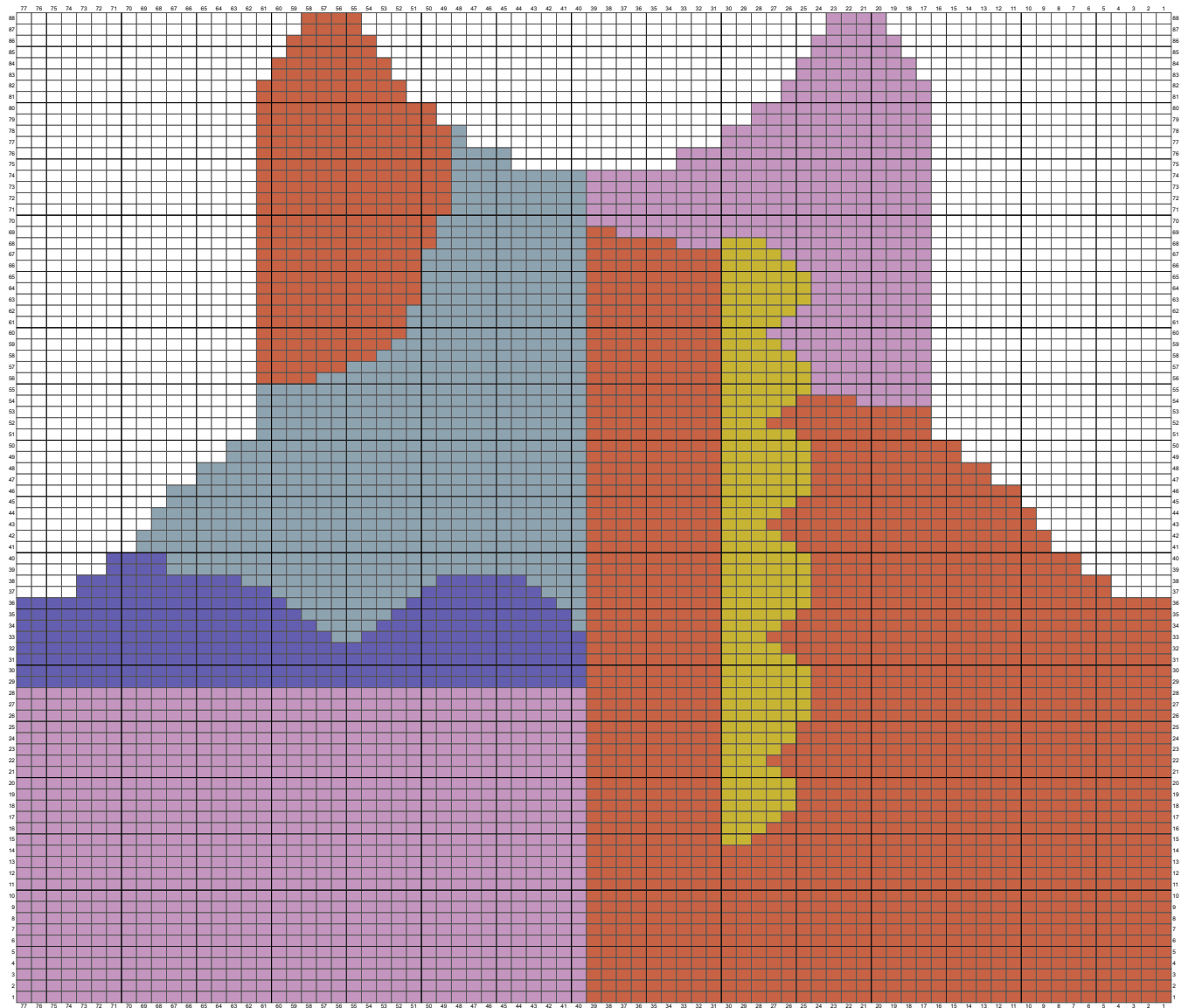
Size 2 - Back



- No stitch
- Spirulina
- Very Vivid
- Pleach Blossom
- Nymph
- Pumpkin
- Cirrus

CHARTS

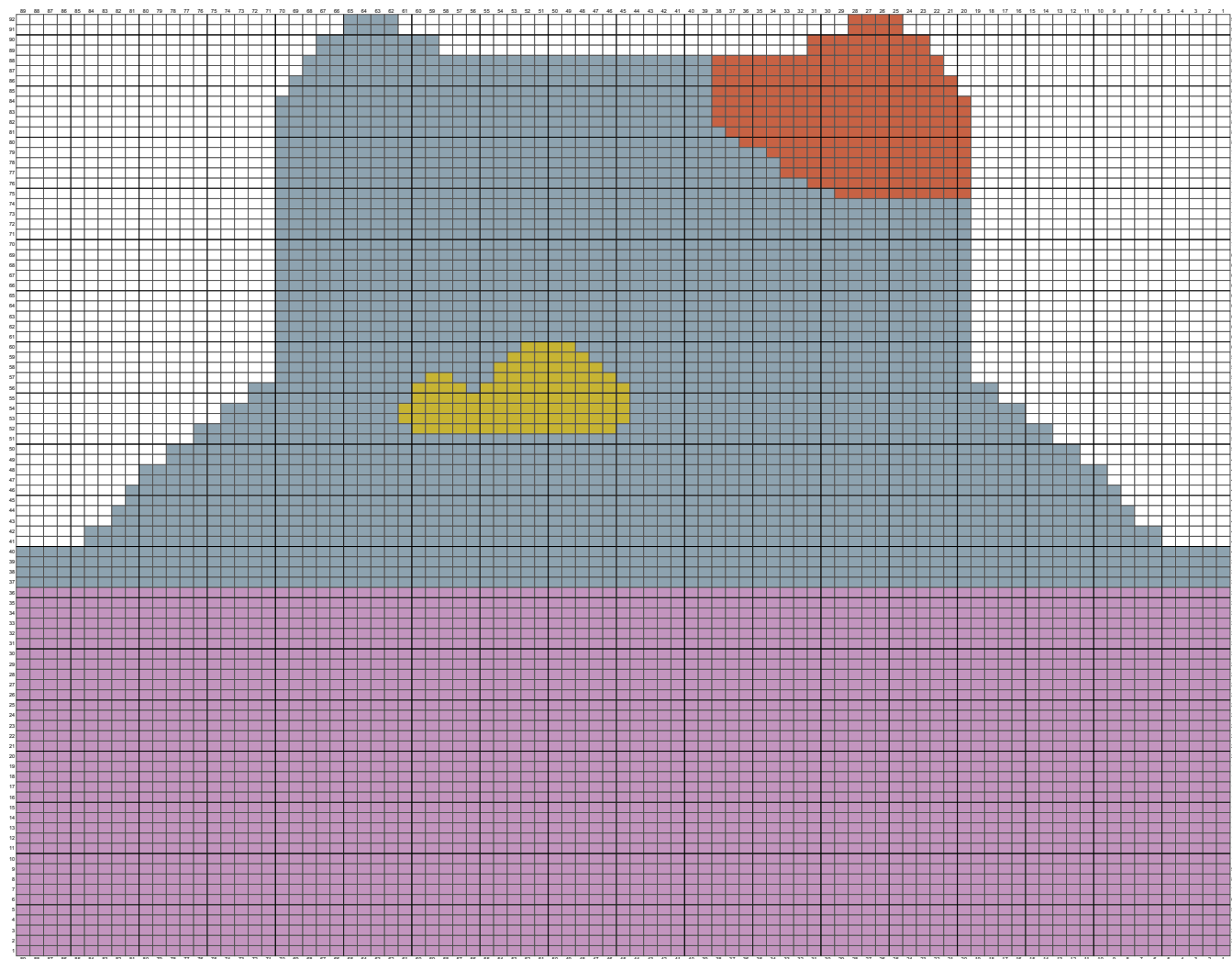
Size 2 - Front



- No stitch
- Spirulina
- Very Vivid
- Pleach Blossom
- Nymph
- Pumpkin
- Cirrus

CHARTS

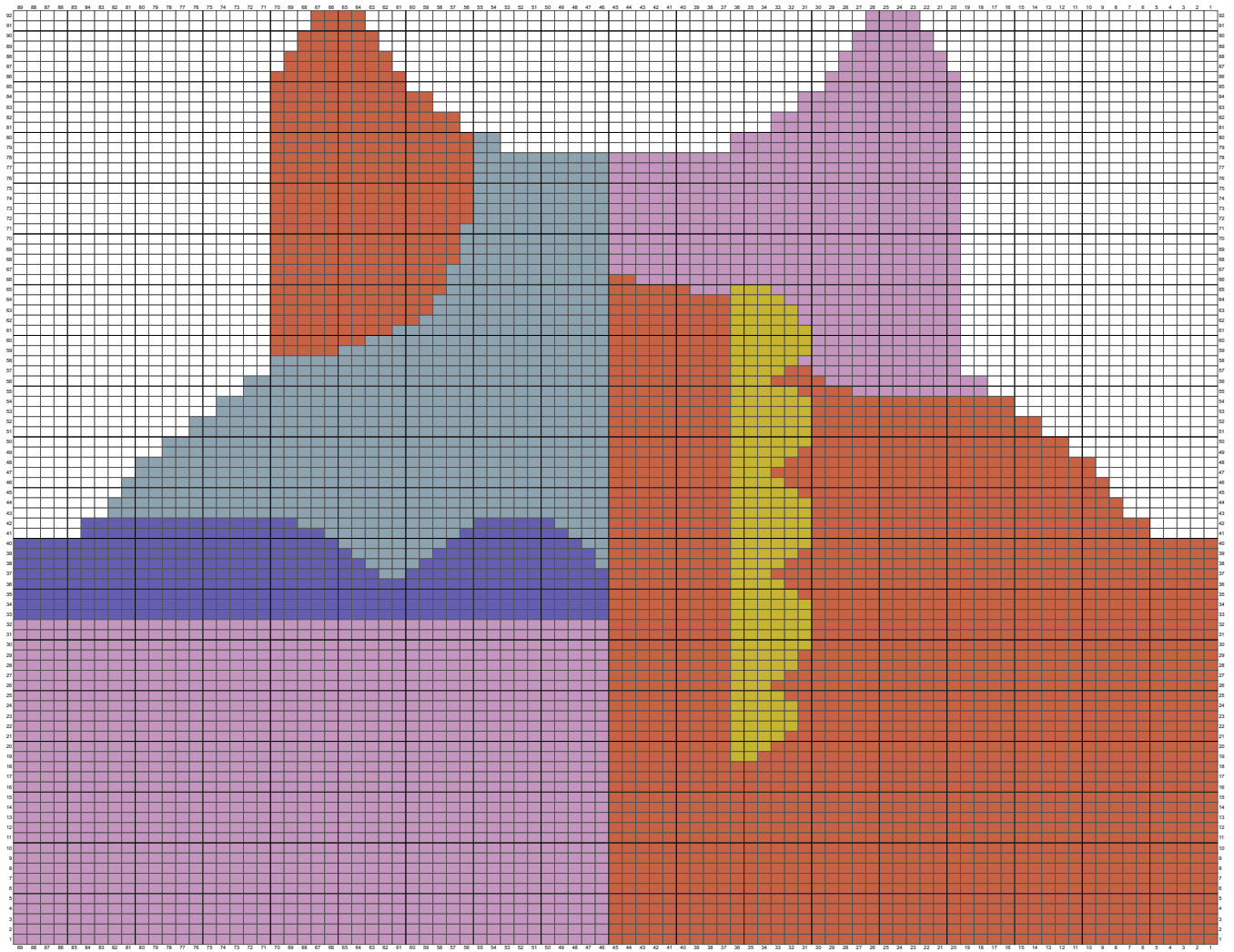
Size 3 - Back



- No stitch
- Spirulina
- Very Vivid
- Pleach Blossom
- Nymph
- Pumpkin
- Cirrus

CHARTS

Size 3 - Front



- No stitch
- Spirulina
- Very Vivid
- Pleach Blossom
- Nymph
- Pumpkin
- Cirrus



MANOS
DEL URUGUAY
— EST. 1968 —

