

L O V E Blanket and Pillow

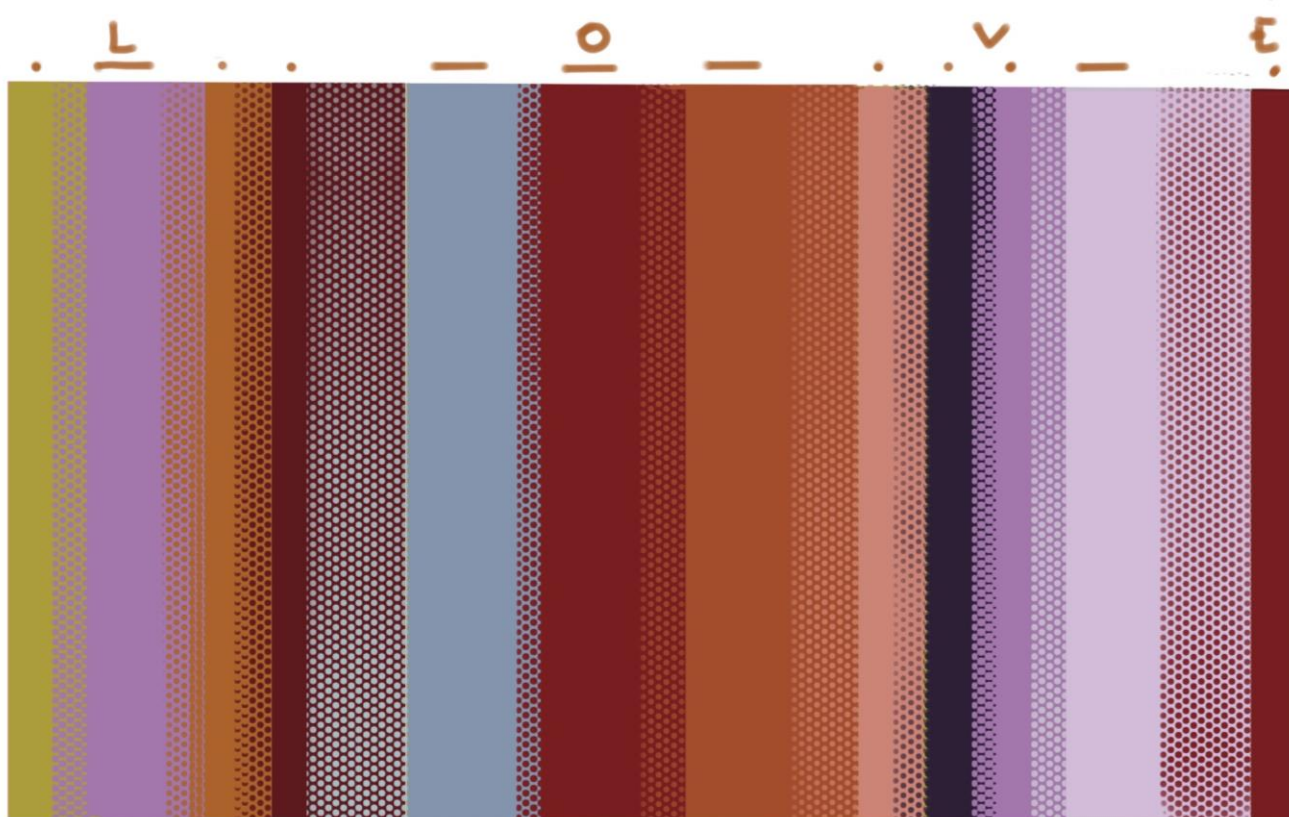
\* \_ \* \* \_ \_ \_ \* \* \* \_ \*

by doris doblhofer



## the LOVE Blanket and Pillow

by doris doblhofer



For me, blankets - and cushions - are the embodiment of coziness. They embrace and warm not only the body but the soul, too. These blanket and cushion are knitted with a simple linen stitch, beautiful on both sides of the piece! The stripes do not only celebrate the beauty of colors, but also represent the morse code of LOVE. Who doesn't want to be wrapped in love, do you?

### Finished Measurements

blanket: 55' x 67' (140 x 170cm)

cushion: 17' x 17' (43 x 43 cm) (for e.g. 18'x18' (46 x 46 cm) inlet)

### Needles and Tools

Circular Needles no. 11/ 8mm (100 or 120cm)

Tapestry Needle

### Gauge

15sts x 22rows = 10 x 10 cm (4' x 4')

knitted in linen stitch with circular needles no. 11/ 8mm

## Yarn

### Manos del Uruguay Cardo

100% Corriedale Wool, 100 mts / 109 yds per 100 grs skein

color	name	# skeins for blanket	# skeins for pillow	total when making both blanket and pillow
A	Spirulina	1	1	2
B	Nymph	3	1	4
color	Goldenrod	1	1	2
D	Brick	2	1	2
E	Cirrus	3	1	3
F	Sanguine	4	1	5
G	Pumpkin	3	1	3
H	Peach Blossom	2	1	2
I	Concord	1	1	2
J	Ethereal	3	1	3

## Linen Stitch

**row 1** (right side): \*knit 1, slip one purl wise with yarn in front\*, repeat between \* \* across to end of row

**row 2** (wrong side): \*purl 1, slip one purl wise with yarn in back\*, repeat between \* \* across to end of row.

These two rows are repeated across the whole blanket and cushion. That's how easy it is!

*I designed the Love blanket using the morse code, where characters are made by a specific combination of short (\*) signs, long (-) signs and breaks.*



*In our blanket, the morse code for LOVE will be created by the color stripes.*

*Like this:*

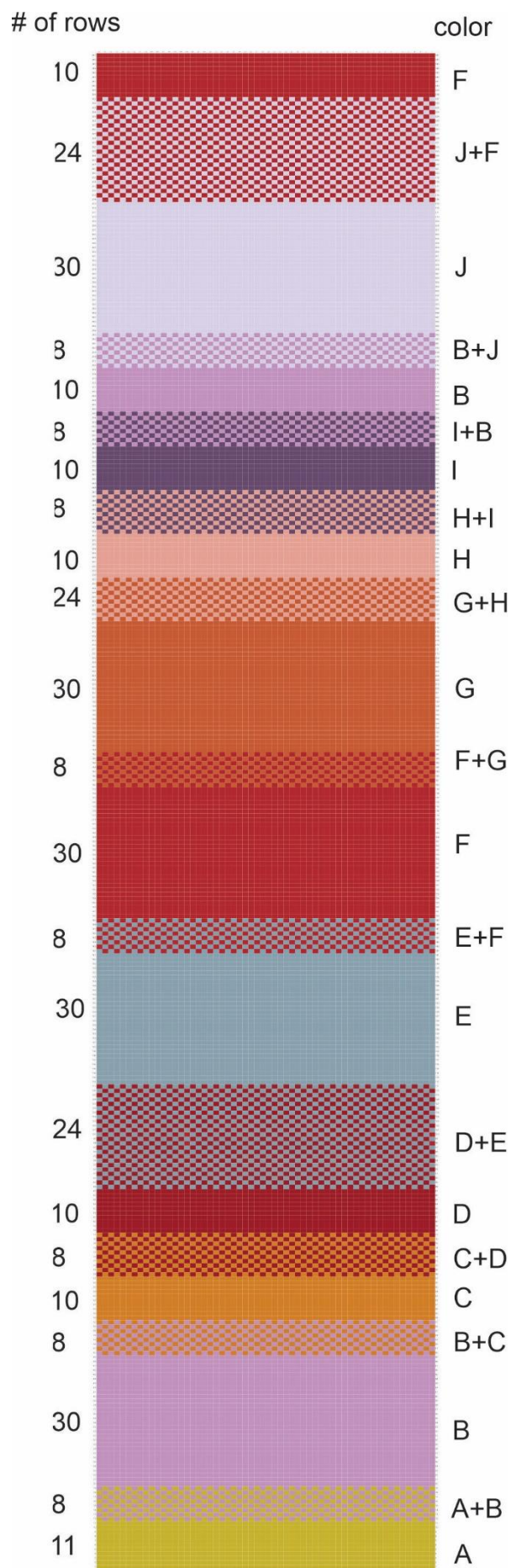
*10 single colored rows make a short sign*

*30 single colored rows make a long sign*

*8 two-colors rows make a small break*

*24 two-colors rows make a big break.*

**Two colored** linen stitch: work 2 rows in one color, 2 rows in the other color, repeat.



## MAKE: LOVE blanket

The design chart above shows the sequence of stripes of the blanket. The blanket is created from bottom to top.

On the right side there are the colors and in the left there are the number of rows per stripe (solid or two colors).

Let's start!

1. Cast on 204 stitches with color A with needles no.11/ 8mm with a long tail cast on. Knit row 2 of the linen stitch pattern (wrong side). This is the first of eleven rows with color A. Follow with the general linen stitch alternating row 1 and 2 (see above) five times: 11 rows with color A are finished.
2. 8 rows of two colored linen stitch (color A and B: \*2 rows with color B, 2 rows with col A\*, repeat once.)
3. 30 rows with Col B.
4. 8 rows two colored (col B and C)
5. 10 rows col C
6. 8 rows two colored (col C and D)
7. 10 rows col D
8. 24 rows two colored (D and E)
9. Follow the design chart in this way till the top of the blanket.
10. Cast off (right side): knit 1, slip 1, bind off 1, \*knit 1, bind off 1. slip 1, bind off 1\*, repeat between \* \* across the row till the last stitch: knit 1 (instead of slip1), bind off the last stitch normally, cut the yarn, pull the end through last loop and tighten up.
11. Weave in all ends. Your beautiful LOVE blanket is ready to enjoy 🧶
12. If you want to create a more playful look (see photo on page 1): make tassels out of your leftovers and spread them equally along the smaller edges.



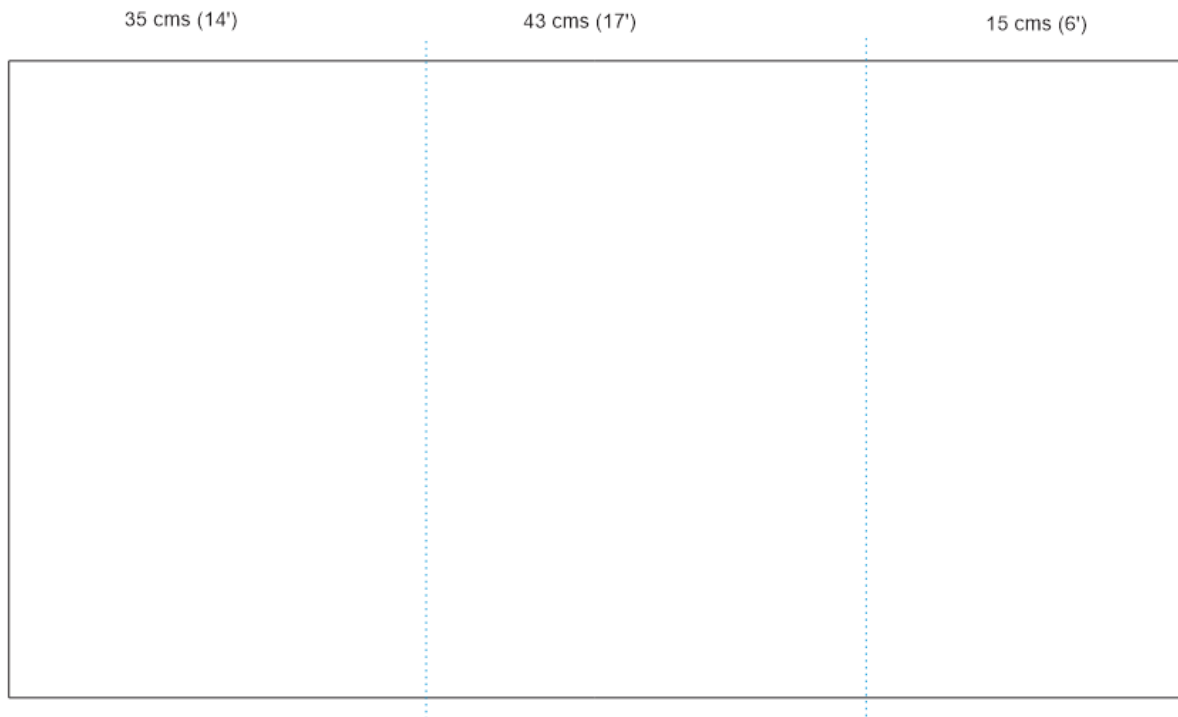
**MAKE:**  
**LOVE cushion**

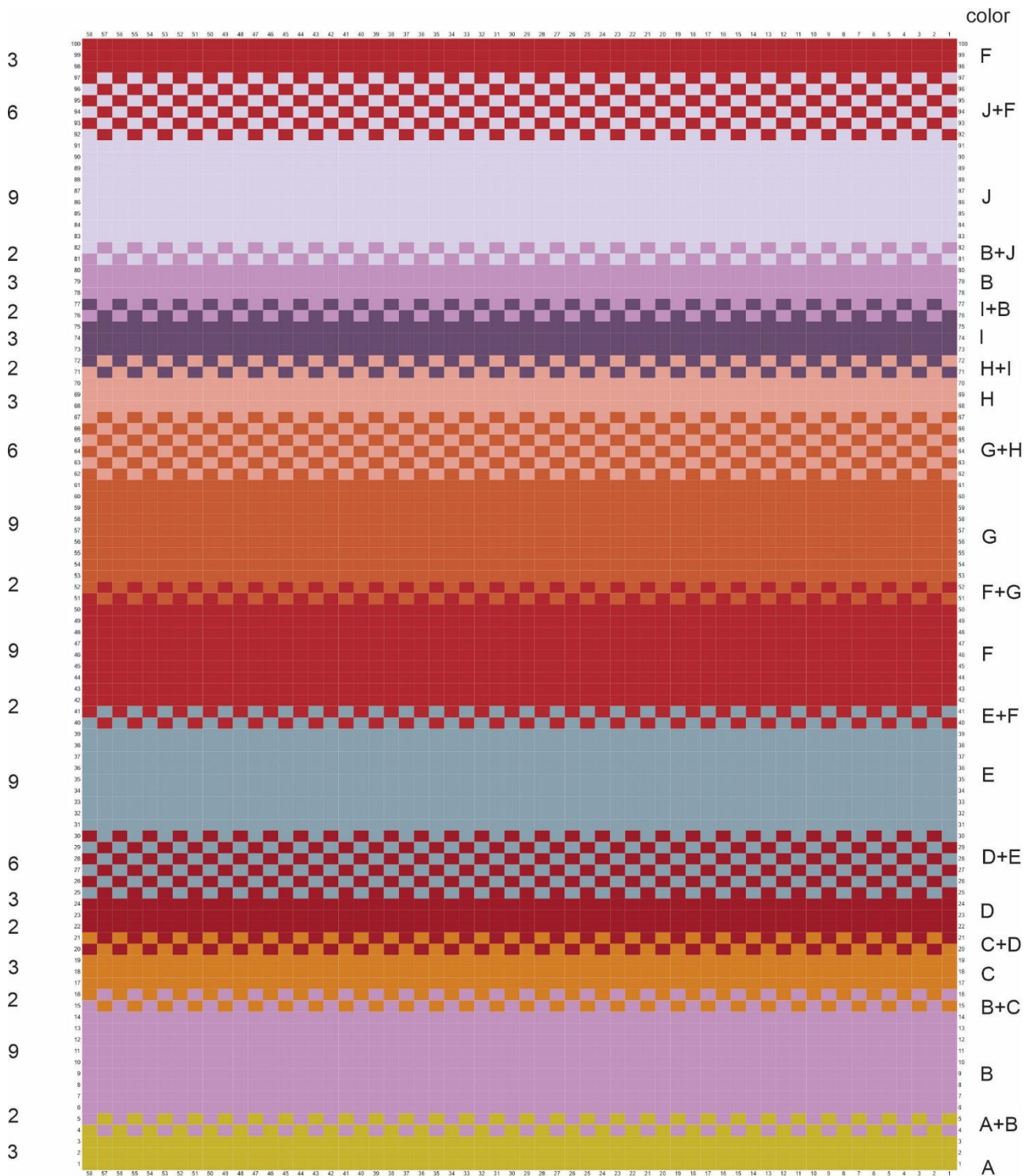
**Additional Tools:**

Crochet Hook no. 10(J)/ 6mm

3 x 15mm Buttons of your choice (the picture shows pearl buttons)

The LOVE cushion is knitted in one piece, from bottom to top. The design chart shows the position where the piece will be folded to achieve a size of about 43 x 43 cm (17x17'). The closure is made of buttons on one side and loops on the other side.





### Important adaptations to Linen Stitch:

The color scheme is the same as of the blanket, only the number of rows is smaller. You see the number of rows on the right side of the chart. Just follow the chart like with the blanket.

**Two colors stripes** in this pattern are made with **alternating colors every row**.

*Rows are named RSR (right side row) and WSR (wrong side row).*

### **Directions for the adapted Linen Stitch Pattern:**

- **Right Side Row:** knit 1, slip 1 stitch with yarn in front, repeat.
- **Wrong Side Row:** purl 1, slip 1 stitch with yarn in back, repeat.

*Make sure always knit(or purl) the stiches that were slipped in the previous row and slip the stitches that were knitted (or purled) in the previous row.*

*RSRs - When it comes to a **two colors stripe** you have to make two RSRs after each other (see the details below). To do this you do not turn the needles on the end of the row but slide the stitches to the other end of the circular needles and make the second row with second color on the same side: knit every slip stitch of the row before and slip every purl stitch of the row before with yarn in front.*

*WSRs - When it comes to a **two colors stripe** you have to make two WSRs after each other, (see details below). To do this you do not turn the needles on the end of row but slide the stitches to the other end of the circular needles and make a second row with second color on the same side: purl every slip stitch of the row before and slip every purl stitch of the row before with yarn in back.*

*Details how to knit **two colors stripes with changing colors every row:***

**A. Your last row ( a solid one color stripe) is a RSR with color x:**

1. Slide the stitches to the other end of the circular needles. Make a second **RSR** with **color y**, following the directions above. Threads of both colors are now on left side ->
2. Turn the needles and make a **WSR** with **color x**:
  - *If the stripe is of just two rows, cut the yarn of color x and go to 7.*
3. Slide the stitches to the other end of the needles and make another **WSR** with **color y**. Threads of both colors are on left side ->
4. Turn the needles and make a **RSR** with **color x**.
5. Slide the stitches to the other end of the needles and make a **RSR** with **color y**. Both threads are on the left side ->
6. Turn the needles and make a **WSR** with **color x**, cut the yarn of **color x**. This is the end of the two colored stripe.

Start the solid one color stripe with **color y** by sliding the stitches to the other end of the needles and making a second **WSR**. Turn the needles and follow the design chart with again alternating RSR and WSR till next two colors stripe.

**B. Your last row is WSR with color x:**

1. Turn the needles and make a **RSR** with **color y**
2. Slide the stitches to the other end of the needles and make a second **RSR** with **color x**. Both threads are on the left side.
  - *If the stripe is of just two rows, cut the yarn of color x and go to 7.*
3. Turn the needles and make a **WSR** with **color y**
4. Slide the stitches and do a second **WSR** with **color x**
5. Turn the needles and make a **RSR** with **color y**
6. Slide the stitches and make a second **RSR** with **color x**. Cut the yarn of color x.
7. Turn the needles and start the one colored stripe with a **WSR** and **color y**. Follow the design chart by again alternating RSR and WSR with color y till next two colored stripe.

**Let's start:**

1. **Cast on** 140 stitches with color A on circular needles and follow the design chart above with a WSR and two further rows - RSR, WSR - of linen stitch.
2. **Cast off** the last RSR (col. F):
  - If the first stitch on your left needle is a purl stitch of the last row: slip 1, knit 1, bind off 1, \*slip 1, bind off 1, knit 1, bind off 1\*, repeat \*\* till the last stitch.

- If the first stitch on your left needle is a slip stitch of the last row: knit 1, slip 1, bind off 1, \*knit 1, bind off 1, slip 1, bind off 1\*, repeat \*\* till the last stitch.

3. **Last stitch:** knit 1, bind off the last stitch, cut the yarn, pull the end through last loop and tighten up.

4. **Crochet Border:** rotate the pillow 90 degrees clockwise, with right side facing you. You will now crochet a border on the small side of the knitted rectangle. Crochet directly into the border stitches (every second row) of the knitted piece, every row starting from right to left in a different color (see the example on the right). Take same color combination or one you like the most from your leftovers.



5. **Row 1:** crochet pattern of border is **herringbone half double crochet stitch**: chain 1 (doesn't count as stitch), \*yarn over, insert hook into border stitch of first row, yarn over, draw loop through the stitch AND the first loop on hook, yarn over and draw through both loops on hook\*. Repeat \*\* till the end of the row. Chain 1, cut the yarn and draw thread through last loop, tighten up.

6. **Row 2-5:** as row 1, in different colors (or only one color if you like), every row starting on the right side.

7. **Row 6:** final row, where you also work the **button loops** of the cushion closure, again from right to left on the right side. The row is made of simple **slip stitches** (into front and back loop of the stitch below) and **chains** on the three locations where the buttons will be placed on the opposite side of the cushion. See on the design chart and picture above where the buttons are placed.

The final row is made of slip stitches with exception of the button loops. When it comes to the buttons position, \*chain 3, skip 3 and continue with slip stitches till the next button\*, repeat \*to\* 2 times, work slip stitches till the end of the row. Make a final chain, cut the yarn, draw thread through last loop and tighten up.

8. **Weave in** all ends.

9. Place the pillow onto a table, with the wrong side facing you, from bottom to top like knitted. Fold the left and right edge together, creating an overlap. The part with the crocheted border lies above the opposite part (where the buttons will be sewn on). There is the final cushion cover, with open edges above and below. Measure the width of the folded cushion. It should be about 43 cm (like the height). Play with the overlapping part till you reach this width. Take little clips or safety pins to fix the width by holding together front and back of the open edges. Turn the piece, the cushion front is facing you. Close the edges:

- Upper open edge: take color F and close the edge from right to left by crocheting slip stitches into cushion front and back. Insert hook into last rows of the two layers and work 1 slip stitch into every stitch of the last rows. When it comes to the overlapping part, work through three layers at the same time. Last stitch: make one final chain, cut the yarn, pull thread through and tighten up.
- Lower open edge: rotate piece 180 degrees around and do the same on this edge with color A.
- Weave in ends.

10. **Buttons:** sew the buttons on the corresponding locations, fitting the button holes on the crocheted border (see design chart and photo).
11. **Finally** sew 5cm on both sides of the crocheted border onto the layer below, where buttons are. Weave in the ends.

Your Love Pillow Cover is ready to be filled 🐾. Hope you love it ❤️.

