

TRIANGLE BLANKET & PILLOW

by doris doblhofer
@candyarn.by.dodo



MANOS
DEL URUGUAY
— EST. 1968 —

Note from Dodo:

For me, blankets and cushions are the embodiment of coziness. They embrace and warm not only the body but the soul. This blanket and pillow are made of simple half double crochets only. It's easy and fast to do. The art of making is based on intarsia crochet technique, just following the colour template.

Please read the entire pattern before starting:).

Finished Measurements

Big Blanket : 59' x 81' / 150 x 205 cm
Small Blanket: 43' x 59' / 110 x 150 cm
Cushion: 18,1' x 22,8' / 46 x 58 cm

Needles and Tools

Crochet Hook 6mm, No. J/ 10
Tapestry Needle

Gauge

12 sts x 10 rows = 10 x 10 cm (4' x 4')

crocheted in half double crochet (UK: half treble crochet) with hook 6mm, creating an oblique line with two colours (see below: Basics and Fig.1)

Abbreviations:

st(s): stitch(es)

hdc(s): half double crochet(s)

r: row

A: colour A

ch(s): chain(s)

sk: skip 1 st

2i1: hdc 2 into the one stitch.

Yarn

Manos del Uruguay Cardo

100% Corriedale Wool, 100 mts / 109 yds per 100 grs skein

Colors

Colours:	Skeins:		
	blanket	small blanket	cushion
A: Cirrus	6	4	
B: Gecko	5	3	1
C: Fjord	5	3	1
D: Pesto	1	1	
E: Nymph	3	2	1(2)*
F: Sanguine	2	1	1
G: Peach Blossom	3	2	1
H: Concord	1	1	1
I: Brick	2	1	1
J: Ethereal	2	1	
K: Pumpkin	2	1	1
L: Spirulina	2	1	1
M: Very Vivid	1	1	
N: Weath	1	0	
O: Chambray	1	1	

* If you are knitting the blanket and cushion, you will only need one extra skein of yarn in color E for the cushion. If you are making only the cushion you'll need 2 balls of this colour.



TRIANGLE Blanket, Big (Small) Size

The beauty of this blanket results from the combination of an easy crochet technique (half double crochet stitches only!) with a truly cosy feel and the design of beautiful colours in triangles and squares. Made with a hook 6mm, you'll be making quick progress with both the blanket and the cushion. While you will find half double crochets no trouble the only focus to make is on creating the triangles and squares. Just follow the pattern and figures!.

IMPORTANT:

all hdc are crocheted under both legs of the < (means the V shape that you see when you look from above to the upper side of the stitches: <<<<<<).

edge:

After the last hdc of a row, make **one turning chain** (doesn't count as stitch), **turn** the piece and crochet the first hdc of the new row into the last hdc of the previous row. This will create a beautiful edge. (Attention: the turning chain will not be mentioned in the upcoming directions. Just do it at the end of each row.)

#changing colours (intarsia crochet):

To make a clean colour change you need to complete the last stitch of the first colour with the second colour: make the last stitch of the first colour like this: yarn over and insert the hook into the next stitch. yarn over and pull up a loop.

You have three loops on the hook. Drop the first colour and complete the stitch: yarn over with the new colour, pull the yarn through all three loops on the hook.

You now have changed colour, the next stitch is the first stitch of the new colour on the chart. Also apply this technique when a stitch has to be skipped between the colour blocks.

The yarn left between rows corresponding to the color change must always be passed to the wrong side.

#oblique sides of colour blocks (fig.1):



each box represents one hdc in corresponding colour. Every row is shown.



A box with a **dot** in it means: **2i1**.



The white box next to it means: skip this stitch.

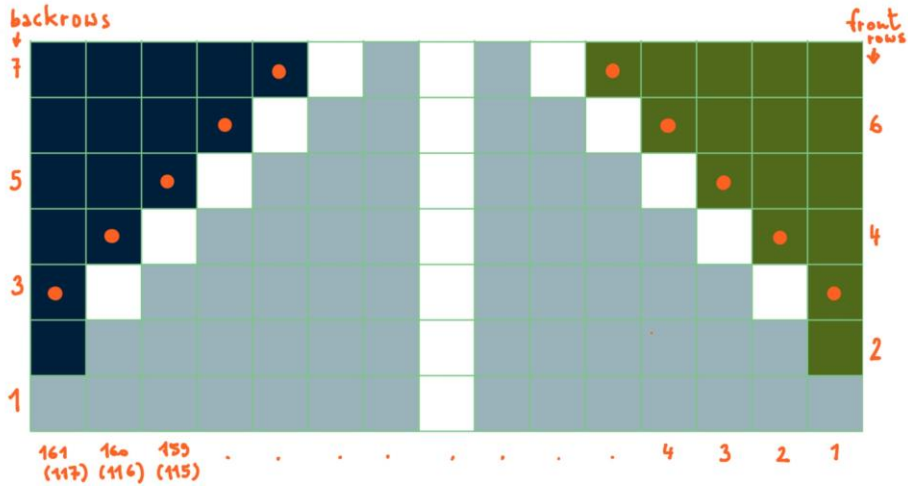


Fig. 1 shows left and right side of the first rows of the blanket (the white column in the middle is a place holder for the sts in between left and right, depending on the size of the blanket).

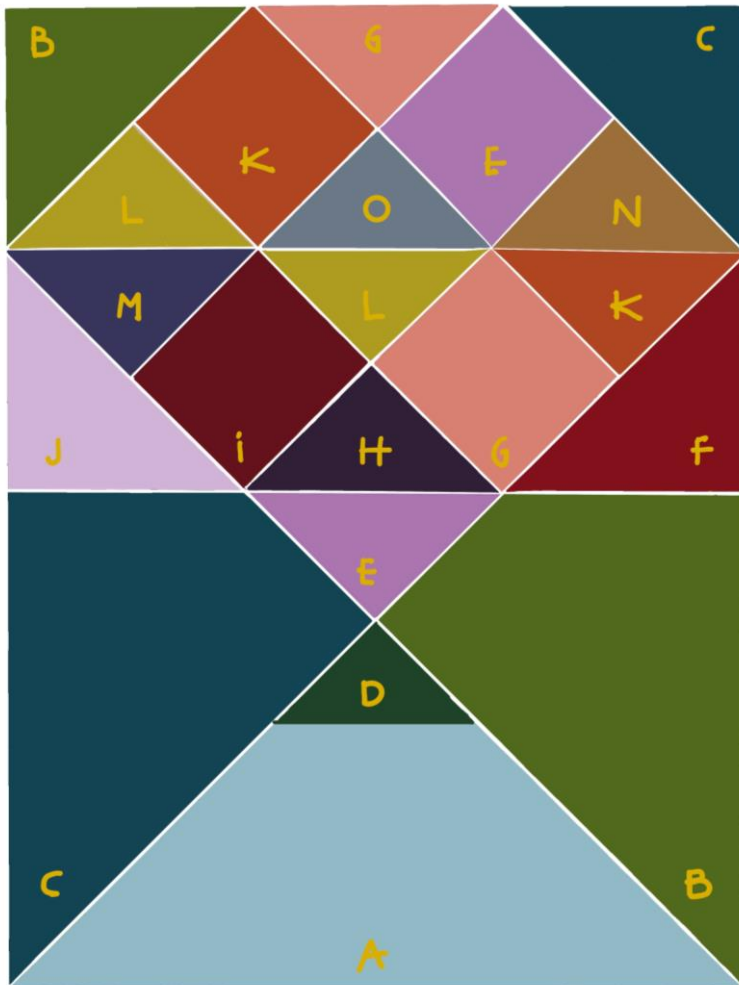


Fig. 2

Fig. 2 shows the design including the corresponding letters for each colour (the white lines are not part of the design, but are only there for readability).

There are three to seven different colours in one row, your intarsia crocheting stays entertaining the whole time;)

Odd numbers are back rows, even numbers front rows. In the description below you'll find the even numbers on the right side, the odd numbers on the left. Read even rows from the right and odd rows from the left (as crocheting)

Keep in mind the basics described above.

For keeping the directions as simple as possible I introduce the upcoming abbreviations:

B1 2i1 sk = "with col B hdc 1, hdc 2 into one st, skip 1"

A17 sk = "with col A hdc 17, skip 1"

C2i1 1 = with col C hdc 2 into one stitch, hdc 1, ch1, turn"

("ch1 and turn" is how you end each row. It will not be mentioned specifically in the upcoming directions. Attention: When the next row starts with a new colour, ch1 is done already in the new colour)

You will find the correct instructions for the small blanket in brackets. If there are no brackets, the numbers for the big size are the same for the small one.

Let's go:

Begin with **A ch161 (117)** plus one turning ch (doesn't count as stitch).

r1 (Fig.1):

A hdc1 into the second chain from hook, hdc1 in each chain across, ch 1 with **B** and turn (=161/ 117 hdc)

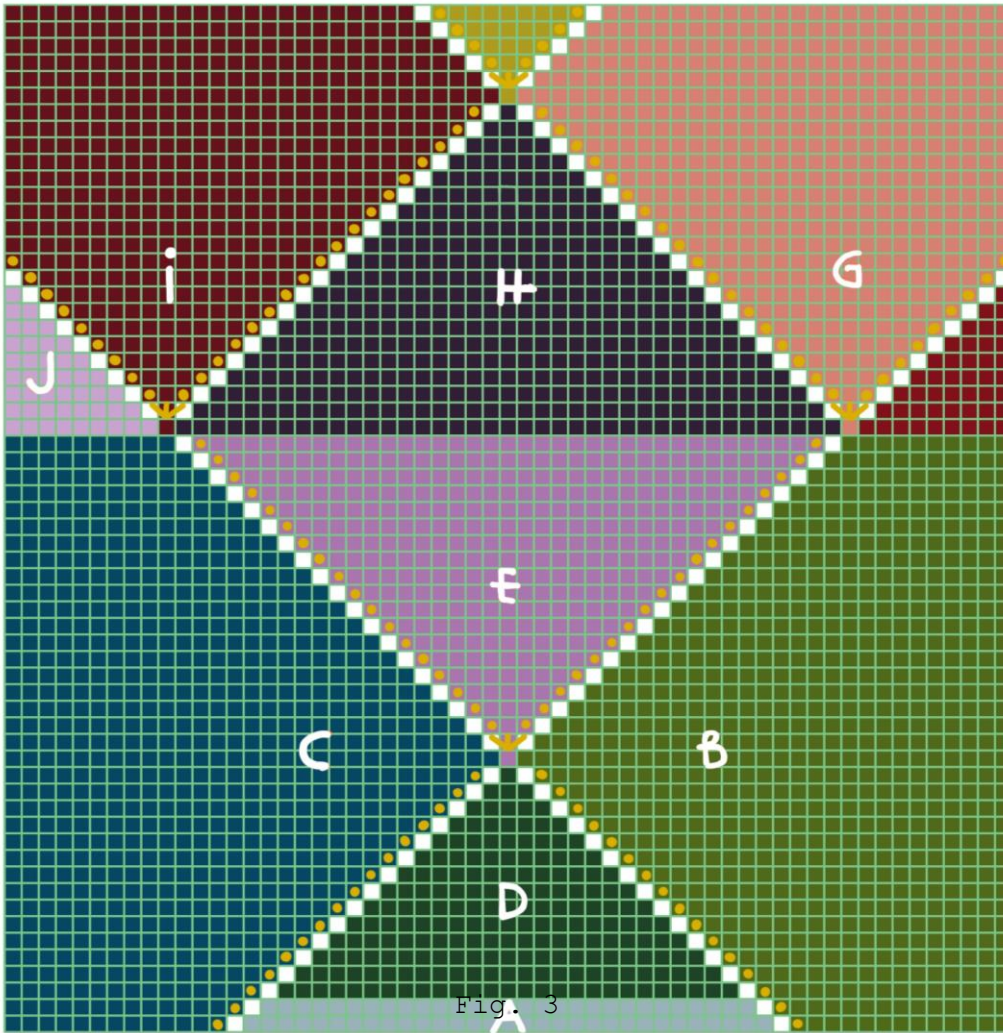
r ->	C	A	B	<- r
	1	159 (115)	1	2
3	2i1	sk 157 (113) sk	2i1	
	1 2i1	sk 155 (111) sk	2i1 1	4
5	2 2i1	sk 153 (109) sk	2i1 2	

The basic **pattern** (Fig.1 & 3):

***decreasing** colour block: **skip** the st nearest to the oblique side. If there are 2 oblique sides, sk1 on each side. The white boxes in Fig. 1 and 3 represent the skipped sts.

***increasing** colour block: **2i1** nearest to the oblique side (**dot** in the box indicates these sts in Fig. 1 and 3).

The special case **3i1** (Fig.3): boxes with three lines in it appear at the beginning of a new colour, when creating a diamond. When increasing from hdc 1 in the first row to hdc 3 in the next row: hdc 3 into the one hdc of the same colour the row below and skip the stitch before and afterwards.



(First time in r83 (61)).

In r61 (45) you introduce the new col D, replacing a current colour (A) for the first time. Fig. 3 shows a cutout of the blanket to enable a better overview of the overall pattern.

You do not have to count the little boxes:

when new colours are introduced and/ or the oblique sides change directions the significant rows are described in detail below.

The pattern will become self-evident while working row by row.

Continue the basic pattern until...

r ->	C	A	B	<- r
	57 (41) 2i1	sk 43 (31) sk	2i1 57 (41)	60 (44)
		D		
61 (45)	58 (42) 2i1	sk 41 (39) sk	2i1 58 (42)	
	59 (43) 2i1	sk 39 (27) sk	2i1 59 (43)	62 (46)
	continue pattern...until			

81 (59)	78 (56) 2i1	sk 1 sk	2i1 78 (56)	
		E		
	80 (58)	1	80 (58)	82 (60)
83 (61)	79 (57)	sk 3i1 sk	79 (57)	
	78 (56)	sk 2i1 1 2i1 sk	78 (56)	84 (62)

Continue... until

r ->	J	C	E	B	F	<- r
	ch1	54	sk 2i1 49 2i1 sk	54		108
(79)		(39)	(sk 2i1 35 2i1 sk)	(39)	(ch1)	
with r109 (r80) you switch all previous colours and start with the second half of the blanket.						
	J	I	H	G	F	
109	53 (38)	1	53 (39)	1	53 (38)	(80)
(81)	52 (37)	sk 3i1 sk	51 (37)	sk 3i1 sk	52 (37)	110

continue... until:

r ->	J		I	H	G		F	<- r
135 (99)	27 (19)		sk 2i1 49 2i1 sk (sk 2i1 35 2i1 sk)	1	sk 2i1 49 2i1 sk (sk 2i1 35 2i1 sk)		27 (19)	
		M		L		K		
	26 (18)	1	53 (39)	1	53 (39)	1	26 (18)	136 (100)
137 (101)	25 sk (17 sk)	3i1	sk 51 sk (sk 37 sk)	3i1	sk 51 sk (sk 37 sk)	3i1	sk 25 (sk 17)	
	24 sk (16 sk)	2i1 1 2i1	sk 49 sk (sk 35 sk)	2i1 1 2i1	sk 49 sk (sk 35 sk)	2i1 1 2i1	sk 24 (sk 16)	138 (102)

big size continue pattern... until:

r ->	J	M	I	L	G	K	F	<- r
161	1 sk	2i1 47 2i1	sk 3 sk	2i1 47 2i1	sk 3 sk	2i1 47 2i1	sk 1	
		51 2i1	sk 1 sk	2i1 49 2i1	sk 1 sk	2i1 51		162
	B	L	K	O	E	N	C	
163		53	1	53	1	53		
	1	51 sk	3i1	sk 51 sk	3i1	sk 51	1	164
165	2i1	sk 49 sk	2i1 1 2i1	sk 49 sk	2i1 1 2i1	sk 49 sk	2i1	

	continue pattern... until:							
189	24 2i1	sk 1 sk	2i1 49 2i1	sk 1 sk	2i1 49 2i1	sk 1 sk	2i1 24	
	B		K	G	E		C	
	27		53	1	53		27	190
191	26 2i1		sk 51 sk	3i1	sk 51 sk		2i1 26	
	continue pattern ... until last 2 rows:							
	51 2i1		sk 1 sk	2i1 49 2i1	sk 1 sk		2i1 51	216
217	54			53			54	

(small size) continue pattern... until

r ->	J	M	I	L	G	K	F	<- r
(117)	(1 sk)	(2i1 31 2i1)	(sk 5 sk)	(2i1 31 2i1)	(sk 5 sk)	(2i1 31 2i1)	(sk 1)	
		(35 2i1)	(sk 3 sk)	(2i1 33 2i1)	(sk 3 sk)	(2i1 35)		(118)
(119)		(36 2i1)	(sk 1 sk)	(2i1 35 2i1)	(sk 1 sk)	(2i1 36)		

		(39)		(39)		(39)		(120)
	B	L	K	O	E	N	C	
(121)	(1)	(37)	(1)	(39)	(1)	(37)	(1)	
	2i1	(sk 35 sk)	3i1	(sk 37 sk)	3i1	(sk 35 sk)	2i1	(122)

	contin ue patter n... until:							
(139)	(17 2i1)	(sk 1 sk)	(2i1 33 2i1)	(sk 3 sk)	(2i1 33 2i1)	(sk 1 sk)	(2i1 17)	
	(19)		(39)	(1)	(39)		(19)	(140)
	B		K	G	E		C	
(141)	(17 2i1 sk)		(2i1 35 2i1)	(sk 1 sk)	(2i1 35 2i1)		(sk 2i1 17)	
	(18 2i1)		(sk 37 sk)	(3i1)	(sk 37 sk)		(2i1 18)	(142)
	contin e pattern ... until last 2 rows:							
	(36 2i1)		(sk 1 sk)	(2i1 35 2i1)	(sk 1 sk)		(2i1 36)	(160)
(161)	39			39			39	



Finishing:

*If you want to make a finishing edge (it's optional!) take a colour of your liking (you can switch colours also during the edge making) and circle the blanket with either

- slip stitches
- single crochets or
- moss stitch: *single crochet, ch1, skip one*

Just take the one you like the most.

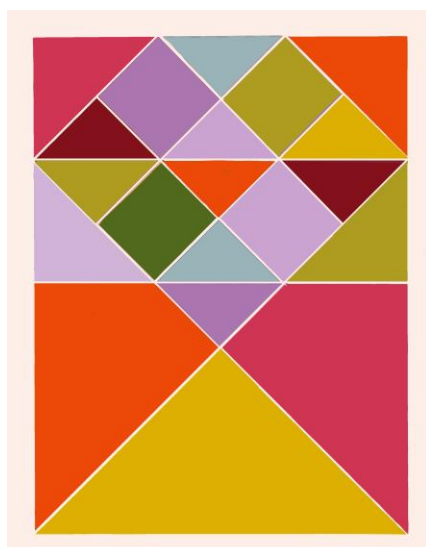
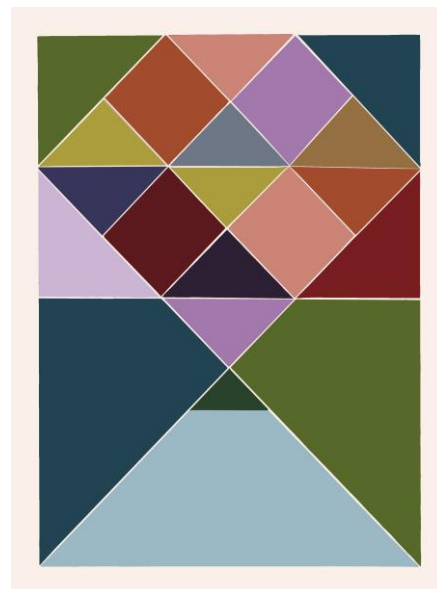
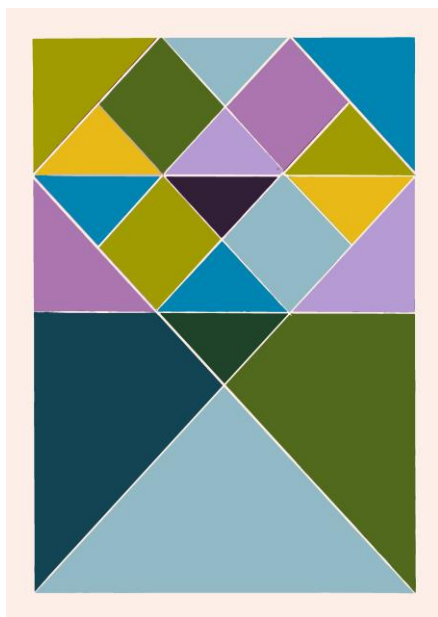
*Weave in all ends

*Block them to the correct size until dried.

*Hint: The quality of CARDO yarn is 100% wool. Airing is the most preferred cleaning practice. Wash only by hand when necessary.

Enjoy your new cosy companion:)

p.s.:some further colour ideas:



TRIANGLE PILLOW



Side 1



Side 2

A blanket loves a matching pillow, right? (And you too?)

This design is again playing with triangles.

Front and back are made separately, with different colour mix. Both sides match the blanket's colour play harmoniously.

All basics from above apply to the cushion as well.

Read the description above (if you only do the cushion) before starting to crochet.

Also remember the abbreviations for instructions of row by row. (See Fig. 1 for illustration of first rows).

Side 1 (fig. 4):

Cast on: K ch 55 + 1 turning ch.

r1: K1 into second chain from hook, hdc1 in each chain across, ch 1 with I and turn (=55 hdc).

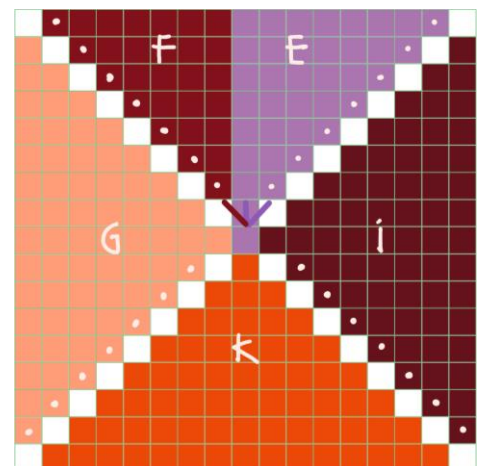


Fig. 4

r ->	G	K	I	<- r
	1	53	1	2
3	2i1	sk 51 sk	2i1	
	1 2i1	sk 49 sk	2i1 1	4

continue...until

r ->	G		K	I	<- r
	25 2i1		sk 1 sk	2i1 25	28
		F	E		
29	27		1	27	
	26 sk	F1 E2 (=3i1)		sk 26	30
31	25 sk	2i1	1 2i1	sk 25	
	24 sk	2i1 1	2 2i1	sk 24	32
33	23 sk	2i1 2	3 2i1	sk 23	
	continue... until				
55	1 sk	2i1 24	25 2i1	sk 1	
		27	28		56

F: Circle all borders with slip stitches. (If you prefer a different colour, just change to your favorite one.) Cut yarn and weave in all ends.

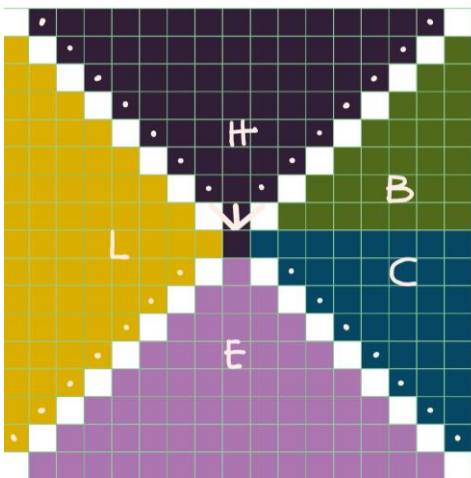


Fig. 5

Side 2 (Fig. 5)

Start the same way as Side 1, only with colours **E** (inst. of K), **C** (instead of I) and **L** (instead of G), until:

r ->	L	E	C	<- r
	25 2i1	sk 1 sk	2i1 25	28
		H		
29	27	1	27	

			B	
	26 sk	3i1	sk 26	30
31	25 sk	2i1 1 2i1	sk 25	
	continue until...			
55	1 sk	2i1 51 2i1	sk 1	
		55		56

H (or your favorite): circle with slip stitches, cut yarn and weave in all ends.

Finishing:

*Moisturize both sides and block them to the correct size until dried.



*Put the two pieces together (with right sides outside). If you have a preferred side, put it on top, so that you see it while crocheting. Connect the two sides by making single crochets into both of the borders. Take your favorite colour(s) and put your hook into the slip stitches of the borders. Only take the back loops (= the loops that are the nearest together). If you look from above, they are the two loops of the slip stitches that touch each other.

*Start on one of the small edges, about 7cm from the left corner. This will become the opening border. Circle around all four sides until 7 cm after the right corner of the starting side. For the corners do a single crochet into the last stitch of this border, ch1, turn 90 degrees clockwise, and make a single crochet into the same stitch. Continue with single crochets. When you get into the last single crochet (7cm from the right corner of the opening border), do about 100 chains before cutting the yarn.

*Weave in all ends.

*Put an inlet into the cushion cover and close the opening: push the long chain loosely through both sides in between hdcs, about 2-4 rows (stitches) away from the border. Take your hook to help you through. Make a simple knot into the end of your chain for completion. Let the end just hang down or hide it under the cushion cover.

*Hint: The quality of CARDO yarn is 100% wool. Airing is the most preferred cleaning practice. Wash only by hand when necessary.

Your Triangle Cushion Cover is ready to be cuddled . Hope you love it .



MANOS
DEL URUGUAY
— EST. 1968 —

