

AMALIA CARDIGAN

by Gabriella Calderini
and Cecilia Lalanne



MANOS
DEL URUGUAY
— EST. 1968 —



Amalia Cardigan

by Gabriella Calderini and Cecilia Lalanne

Amalia is a cardigan that stands out for its fair isle design, the colors of Marla & Sami give a fun and modern touch to the colorwork motif. The front and back are worked in flat knitting, while the sleeves are knitted in the round, then all the pieces are joined to finish with the neck ribbing and buttonhole band. Who wants to have fun with a relaxed fair island? Will you join us?

Sizes

1 (2, 3, 4, 5, 6)

Ease

Recommended ease: approx. 20 cm / 8" of positive ease.

Model wears size 2 with 20 cm / 8" of ease.

Final measurements

Bust circumference: 87 (97, 107, 117.5, 127.5, 138) cms / 34 (38, 42, 46, 50, 54)"

Length from shoulder to bottom hem:
47 cms / 18,5"

Sleeve length from cuff to armhole:
40 cms / 15.5"

Upper sleeve circumference: 27.5 (30, 32.5, 35, 37.5, 41.5) cm / 11 (12, 13, 14, 15, 16.5)"



Yarn

Marla & Sami by Manos del Uruguay. (100% merino superwash), approx. 273 yds / 250 mts per 100 g

Color A (Natural): 4 (4, 5, 5, 6, 6) skeins.

Color B (Denim), color C (Ficus), color D (Gold) and color E (Chili): all sizes, 1 skein.



Needles and Tools

-One pair of straight needles in size 4.0 mm / #6.0 US. (Or size to obtain gauge)

- Circular needle 4,0 mm / #6.0 US. (to knit sleeves, neck and button and buttonhole bands)

Gauge

20/22 sts and 29/26 rows = 4 x 4" [10 x 10 cm] in Sts St/Color work worked flat after blocking with 4,0 mm / #6.0 US. needles.

Abbreviations

K- Knit.

P- Purl.

RS- Right Side.

WS- Wrong Side.

St/Sts- Stitch/Stitches.

K2tog- Knit 2 stitches together. (decrease)

Ssk - Slip, slip, knit. (decrease)

M1- make one (increase).

M1L- increase – Make 1 Left – with your left hand needle, pick up the strand between the last stitch you knitted and the one you are about to knit, introducing the needle from the front to the back, then insert the tip of the right hand needle knitwise into the front leg of the strand and knit as usual.

M1R - increase – Make 1 Right -with your left hand needle, pick up the strand between the last stitch you knitted and the next st on the LH needle, bringing the needle from the back to the front, then insert the tip of the right hand needle purlwise into the back leg of the strand and knit as usual.

W&T- Wrap and turn; work to place stated in pattern, bring yarn front, slip the next st without knitting it, bring the yarn back, slide the slipped st back on left needle, and turn work

BO: Bind off.

PATTERN INSTRUCTIONS

FRONT

With B color (Denim), using 4,0 mm / #6.0 US. needles, cast on 48, (54, 59, 65, 71, 77). Edge stitches, for sewing, are included.

Work in 1x1 rib (k1, p1) until piece measures 2” (5,0 cms) from the cast on edge.

From here we will begin to work the color work (in back and forth) following the instructions in graphic 1, for the left front, and graphic 2, for the right front, until row 69 and 68 respectively to start working the armhole shape.

Front Left Armhole Shape

Important: We will BO the stitches at the beginning of each row. Edge stitches are included.

Row 69 (RS): BO 3 (4, 6, 6, 8, 8) sts, knit until the end. - 45, (50, 53, 59, 63, 69) sts.

Row 70 (WS): Purl to end.

From row 71 work the Dec. Row every RS row 1 (3, 3, 3, 5, 6) times. - 43 (44, 50, 53, 58, 63)sts.

Then work the Dec. Row every 2 RS rows 1 (2, 3, 3, 3, 5) times. - 41 (40, 47, 47, 55, 58)sts.

Decreasing row: K2, ssk, knit to end.

Continue knitting according to the color work chart until row 88 from here we will start the neckline and shoulder shape.

Front Left Neckline and Shoulder Shape - Short Rows

For Sizes 1, 2 and 3 only

Row 89 (RS): Knit to 12 sts before the end, W&T.

Row 90 (and all the even rows): Purl to end.

Row 91: Knit to 3 sts before the last turn, W&T.

Row 93: Same as row 91.

Row 95: Knit to 2 sts before the last turn, W&T.

Row 97: Same as row 95

Row 99: Knit to 1 sts before the last turn, W&T.

Rows 101 and 103: same as row 99.

Row 104: Purl to 6 sts before de end W&T.

Row 105: Same as row 99.

Row 106: Same as row 104

Row 107: Same as row 99.

Picking up row: Purl picking up wrap as you find it from left neckline and shoulder.

For Sizes 4, 5 and 6 only

Row 89 (RS): Knit to 14 sts before the end, W&T.

Row 90 (and all the even rows): Purl to end.

Row 91: Knit to 4 sts before the last turn, W&T.

Row 93: Same as row 91.

Row 95: Knit to 2 sts before the last turn, W&T.

Row 97: Same as row 95

Row 99: Knit to 1 sts before the last turn, W&T.

Rows 101 and 103: same as row 99.

Row 104: Purl to 8 sts before the end W&T.

Row 105: Same as row 99.

Row 106: Same as row 104

Row 107: Same as row 99.

Picking up row: Purl picking up wrap as you find it from left neckline and shoulder.

Work (with color A) even in St st for 0 (0, 4, 8, 12, 16) rows only in the 0 (0, 20, 22, 24, 27) sts from the shoulder.

- Keep 16 (18, 20, 22, 24, 27) front shoulders stitches and neckline stitches on hold (using wasted yarn) to join later with the back

shoulders and neckline rib respectively.

Front Right Armhole Shape

Important: We will **BO** the stitches at the beginning of each row. Edge stitches are included.

Row 68 (WS): BO 3 (4, 6, 6, 8, 8) sts, purl until the end. - 45, (50, 53, 59, 63, 69) sts.

Row 69 (RS): Knit to end.

Row 70: Purl to end.

From row 71 work the Dec. Row every RS row 1 (3, 3, 3, 5, 6) times. - 43 (44, 50, 53, 58, 63)sts.

Then work the Dec. Row every 2 RS rows 1 (2, 3, 3, 3, 5) times. - 41 (40, 47, 47, 55, 58)sts.

Decreasing row: Knit to 4 sts before the end, **k2tog, k2.**

Continue knitting according to the color work chart until row 87, from here we will start the neckline and shoulder shape.



Front Right Neckline and Shoulder Shape - Short Rows

For Sizes 1, 2 and 3 only

Row 90 (WS): Purl to 12 sts before the end, W&T.

Row 91 (and all the odd rows): Knit to end.

Row 92: Purl to 3 sts before the last turn, W&T.

Row 94: Same as row 92.

Row 96: Purl to 2 sts before the last turn, W&T.

Row 98: Same as row 96.

Row 100: Purl to 1 sts before the last turn, W&T.

Rows 102 and 104: same as row 100.

Row 105: Knit to 6 sts before the end W&T.

Row 106: Same as row 100.

Row 107: Same as row 105.

Row 108: Same as row 100.

Picking up row: Knit picking up wrap as you find it from right neckline and shoulder.

For Sizes 4, 5 and 6 only

Row 90 (RS): Purl to 14 sts before the end, W&T.

Row 91 (and all the odd rows): Knit to end.

Row 92: Purl to 4 sts before the last turn, W&T.

Row 94: Same as row 92.

Row 96: Purl to 2 sts before the last turn, W&T.

Row 98: Same as row 96

Row 100: Purl to 1 sts before the last turn, W&T.

Rows 102 and 104: same as row 100.

Row 105: Knit to 8 sts before the end W&T.

Row 106: Same as row 100.

Row 107: Same as row 105.

Row 108: Same as row 100.

Picking up row: Knit picking up wrap as you find it from right neckline and shoulder.

Work (with color A) even in St st for 0 (0, 4, 8, 12, 16) rows only in the 0 (0, 20, 22, 24, 27) sts from the shoulder.

- Keep 16 (18, 20, 22, 24, 27) front shoulders stitches and neckline stitches on hold (using wasted yarn) to join later with the back shoulders and neckline rib respectively.

BACK

With B color (Denim), using 5,0 mm / #8,0 US needles, cast on 87, (97, 107, 117, 127, 133). Edge stitches, for sewing, are included.

Work in 1x1 rib (k1, p1) until piece measures 2" (5,0 cms) from the cast on edge.

Change to color A (natural) and work in Stokinette Stitch until piece measures 12,5" (32,5 cms) from the cast on edge.

Back Armhole Shape

Important: We will BO the stitches at the beginning of each row. Edge stitches are included.

Row 1(RS): BO 4 (4, 5, 6, 8, 8) sts, knit until the end.

Row 2(WS): BO 4 (4, 5, 6, 8, 8) sts, purl until the end. - 79, (89, 97, 105, 111, 117) sts.

Work the Dec. Row every RS row 3 (3, 3, 3, 5, 4) times. - 73 (83, 91, 99, 101, 109)sts.

Then work the Dec. Row every 2 RS rows 2 (2, 2, 3, 3, 3, 3) times. - 69 (79, 87, 93, 95, 103)sts.

Then work in back and forth for 10 (10, 10, 14, 14, 14) more rows.

Decreasing row: K2, k2tog, knit to last 4 sts, ssk, k2.

Back Neckline and Shoulder Shape - Short Rows

Row 1 (RS): Knit until 6 sts before the end, W&T (wrap next stitch and turn, see abbreviations)

Row 2 (WS): Purl until 6 sts before the end, W&T.

Row 3: Knit until 6 sts before the last turn, W&T.

Row 4: Purl until 6 sts before the last turn, W&T.

Repeat these last 2 rows 1 (1, 1, 2, 2, 2) more time.

nit back and forth

Row 7 (RS): BO 37 (43, 45, 49, 47, 49) sts from neckline, picking up wrap, from left shoulder, as you find it from left shoulder.

Row 8 (WS): Purl picking up wrap as you find it from right shoulder.

- Keep both back 16 (18, 20, 22, 24, 27) shoulders stitches on hold (using wasted yarn) to join later with the front shoulders.

SLEEVES (make two)

With B color (Denim), using 4,0 mm / #6.0 US needles, cast on 38, (40, 42, 44, 44, 46), join for working in the round making sure not twist the sts. Place a marker at the beginning.

Work in 1x1 rib (k1, p1) until piece measures 2" (5,0 cms) from the cast on edge.

Sleeve Shape

Change to color A

Increase Row (RS): k2, M1, (k4, M1) repeat to last 2 (2, 4, 2, 2, 4) sts until the end, M1, k2 (k2, k4, k2, k2, k4).- 48 (50, 52, 55, 55, 57) sts. Work even in St st for 3 rows.

Increase Row (RS): K2, M1L, knit to last 2 sts, M1R, k2.

Work even in St st for 5 rows.

Rep last 6 rows 2 (2, 3, 3, 3, 4) more times - 54 (56, 60, 63, 63, 67) sts.

Increase Row (RS): K2, M1L, knit to last 2 sts, M1R, k2.

Work even in St st for 7 rows.

Rep last 8 rows 1 (1, 1, 2, 2, 2) more times - 58 (60, 64, 67, 69, 73) sts.

Increase Row (RS): K2, M1L, knit to last 2 sts, M1R, k2.

Work even in St st for 9 rows.

Rep last 10 rows 2 (2, 2, 2, 2, 2) more times - 64 (66, 70, 73, 75, 79) sts.

Work even in St st for 14 (14, 12, 11, 9, 8) cms / 5.5 (5.5, 4.5, 4, 3.5, 3)".

Sleeve Cap Shape - Short Rows

Row 1(RS): BO 3 (4, 6, 6, 8, 8) sts, knit until the end.

Row 2(WS): BO 3 (4, 6, 6, 8, 8) sts, purl until the end. - 58, (58, 58, 61, 59, 63) sts.

Row 3 (Decrease Row): K2, ssk, knit to last 4 sts, k2tog, k2. - 56 (56, 56, 59, 57, 61) sts.

Row 4: Purl.

Rep last 2 rows 16 more times -24 (24, 24, 27, 25, 29) sts.

Short Rows

Row 1 (RS): Knit until 4 (4, 4, 3, 3, 3) sts before the end, W&T

Row 2 (WS): Purl until 4 (4, 4, 3, 3, 3) sts before the end, W&T.

Row 3: Knit until 4 (4, 4, 3, 3, 3) sts before the last turn, W&T.

Row 4: Purl until 4 (4, 4, 3, 3, 3) sts before the last turn, W&T.

Row 5: Knit picking up wrap as you find it.

Row 6: Purl picking up wrap as you find it.

BO all sts on the next RS row as follows:

K1, back onto left needle, k2tog tbl, repeat from

SHOULDER SEAM

Place the back and front shoulder stitches back on the needles, with the WS facing us, and cast off using the three-needle method. Do this for both shoulders, left and right.

NECKBAND

From RS, pick up and knit 31 (31, 35, 39, 43, 51) sts evenly spaced across right front neck edge, 37 (43, 45, 49, 47, 49) sts evenly spaced across back neck, and 31 (31, 35, 39, 43, 51) sts evenly spaced across left front neck edge – 99 (105, 115, 127, 124, 133, 151) sts.

Row 1 (RS): (k1, p1) to the end.

Row 2 (WS): as the work

Continue ribbing for 7 rows in total.

Bind off loosely .

BUTTON BAND

With RS facing and starting from the neck edge of left front, using a 5mm / US 8 needle pick up and knit one sts for every one row.

Row 1 (WS): (p1, k1) to the end.

Row 2 (RS): as the work

Continue ribbing for 7 rows in total.

Bind off loosely .

BUTTONHOLE BAND

With RS facing and starting from the bottom edge of right front, using a 5mm / US 8 needle pick up and knit one sts for every one row

Row 1 (WS): (p1, k1) to the end.

Row 2 (RS): as the work.

Row 3: On this row, you make 5 buttonholes evenly spaced out. *Work in established ribbing to buttonhole location, yo, k2tog*, repeat from * to * throughout the row.

Row 4: Continue established ribbing as before.

Knit all the yo's from the front loop in order to make the buttonhole big enough.

Row 5: As Row 1

Row 6: As Row 2

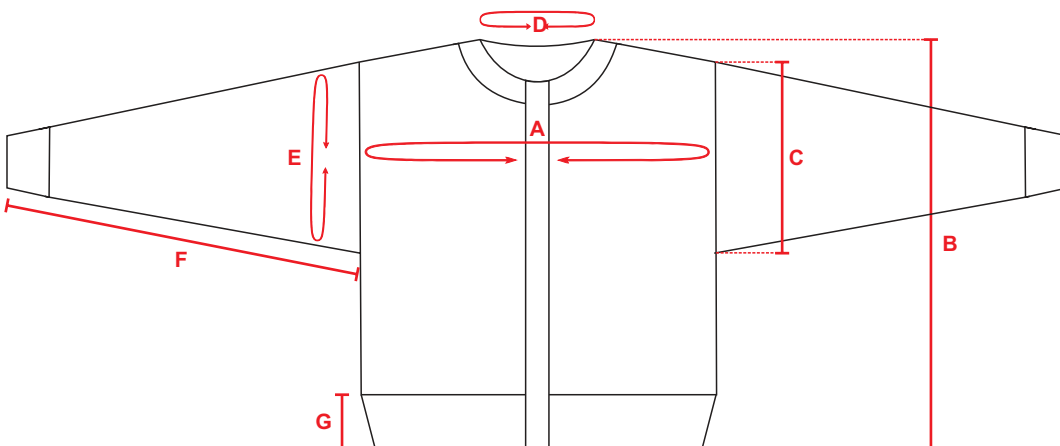
Row 7: As Row 1

Bind off loosely .

FINISHING:

Weave in ends. Steam- or wet-block piece to finished measurements.

MEASURES



A- 87 (97, 107, 117.5, 127.5, 138) cms / 34 (38, 42, 46, 50, 54)"

B- 47cms / 18.5"

C- 16 (16, 18, 20, 22, 25) cm / 6 (6, 7, 8, 8.5, 10)"

D- 36.5 (38.5, 41, 46, 47.5, 49.5) cm /14 (15, 16, 18, 19, 19.5)"

E- 27.5 (30, 32.5, 35, 37.5, 41.5) cm / 11 (12, 13, 14, 15, 16.5)"

F- 40 (40, 40, 42, 42, 43) cms / 15.5 (15.5, 15.5, 16.5, 16.5, 17)"

G- 5.0 cms / 2.0"



Color indications

- Color A (Natural)
- Color B (Denim)
- Color C (Ficus)
- Color D (Gold)
- Color E (Chili)

Chart - Size 1 left

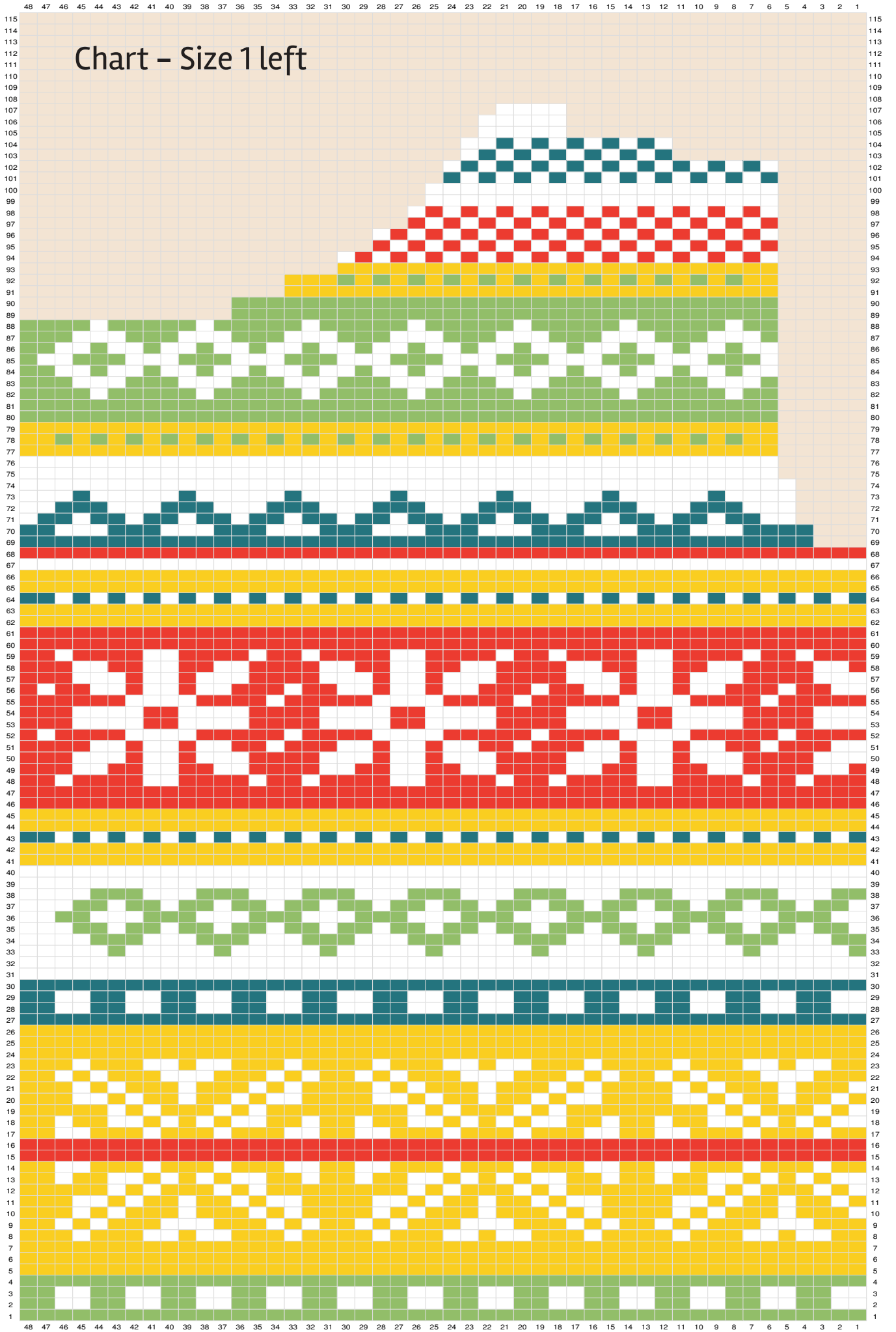


Chart - Size 1 right

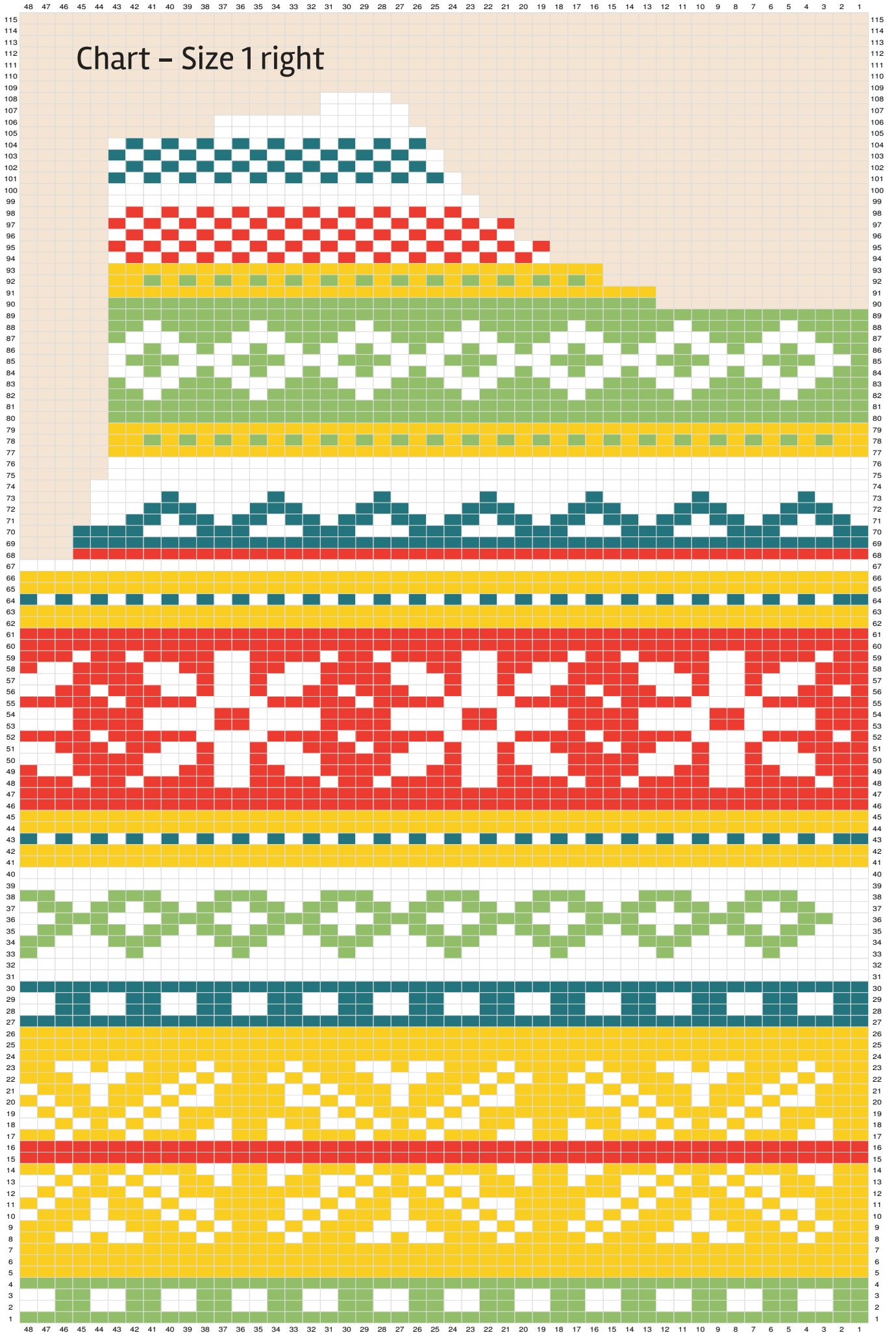


Chart – Size 2 left



Chart - Size 2 right



Chart – Size 3 left

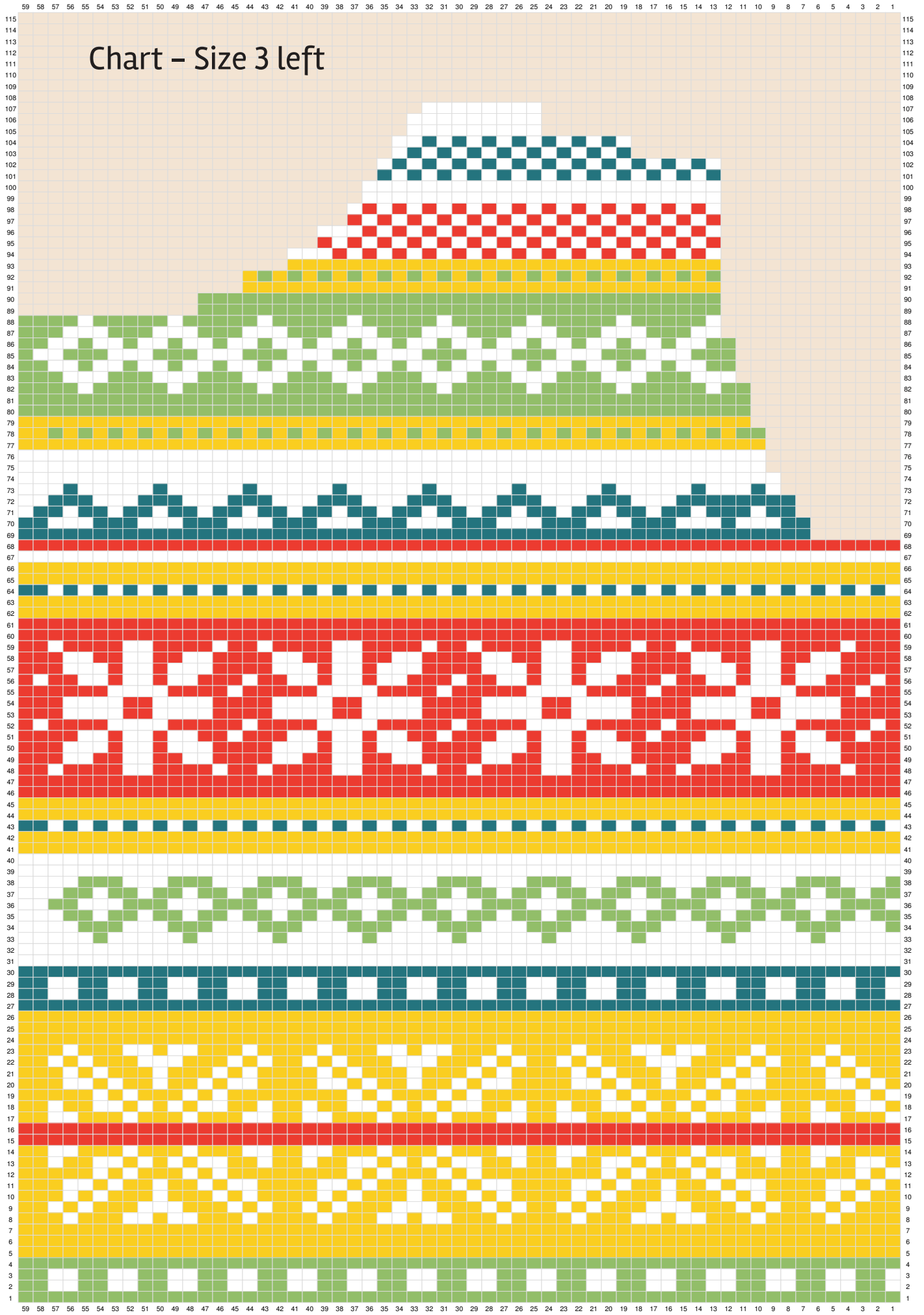


Chart – Size 3 right



Chart – Size 4 left



Chart – Size 4 right



Chart – Size 5 left



Chart – Size 5 right



Chart – Size 6 left



Chart – Size 6 right

