



MANOS DEL URUGUAY

Pluma Shawlette

by Lisa R. Myers



SIZE

60" wingspan x 20.5" at center point

MATERIALS

Manos del Uruguay FINO (70% superfine merino, 30% silk; approx. 100g, 490 yds), 1 sk. Shown in 408 Crystal Goblet.

US #6/4mm ndls, or size to obtain gauge

Ring markers

GAUGE

18 sts and 36 rows = 4" over Garter Stitch

STITCH GUIDE

Garter Stitch (over any number of stitches)

Knit all stitches, every row.

ABBREVIATIONS

k: knit

k2tog: knit 2 together

m: marker

p: purl

pm: place marker

psso: pass slipped stitch over

rep: repeat

sk2p: sl1, k2tog, psso

sl: slip

ssk: slip 2 stitches separately knitwise, then slip them back to the left-hand needle purlwise and knit them together through the back loop.

st(s): stitch(es)

yo: yarn over



INSTRUCTIONS

Cast on 7 sts.

Preparation row (WS): K2, pm, (k1, pm) 3 times, k2.

Row 1: K2, slip m, *yo, k to next m, yo*, slip m, k1, slip m, rep from * to *, slip m, k2.

Row 2: K2, slip m, yo, k to last m, yo, slip m, k2.

Rep rows 1 and 2 7 times more. [55 sts]

Row 17: Work as Row 1.

Row 18: Knit.

Rep rows 17 and 18 43 times more. [231 sts]

Work edging as follows (or refer to Edging Chart for section between asterisks)

Row 1: K2, *yo; ssk, k2, yo, k1, yo, k2; (sk2p, k2, yo, k1, yo, k2) 13 times; k2tog; yo*, k1 (center stitch); rep from * to *, k2. [235 sts]

Row 2 and all even-numbered rows through Row 26: K2, p to center st, k1, p to last 2 sts, k2.

Row 3: K2, *yo, k1; ssk, k1, yo, k3, yo, k1; (sk2p, k1, yo, k3, yo, k1) 13 times; k2tog, k1, yo*, k1 (center stitch); rep from * to *, k2. [239 sts]

Row 5: K2, *yo, k2; (k1, yo, k2, sk2p, k2, yo) 14 times, k1; k2, yo*, k1 (center st); rep from * to *, k2. [243 sts]

Note: The pattern repeat of rows 7, 9, 11, 13, and 15 is the same as Row 5; all that differs is the beginning and end of the rows, and the sts around the center st.

Row 7: K2, *yo, k3; (k1, yo, k2, sk2p, k2, yo) 14 times, k1; k3, yo*, k1 (center stitch); rep from * to *, k2. [247 sts]

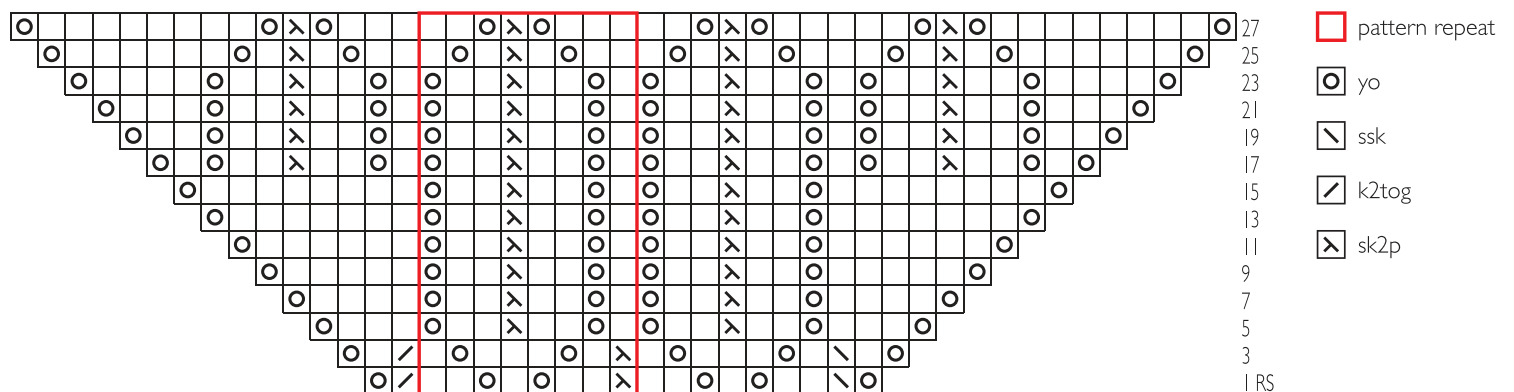
Row 9: K2, *yo, k4; (k1, yo, k2, sk2p, k2, yo) 14 times, k1; k4, yo*, k1 (center stitch); rep from * to *, k2. [251 sts]

Row 11: K2, *yo, k5; (k1, yo, k2, sk2p, k2, yo) 14 times, k1; k5, yo*, k1 (center stitch); rep from * to *, k2. [255 sts]

Row 13: K2, *yo, k6; (k1, yo, k2, sk2p, k2, yo) 14 times, k1; k6, yo*, k1 (center stitch); rep from * to *, k2. [259 sts]

Row 15: K2, *yo, k7; (k1, yo, k2, sk2p, k2, yo) 14 times, k1; k7, yo*, k1 (center stitch); rep from * to *, k2. [263 sts]

EDGING CHART





Note: The pattern repeat of rows 17, 19, 21, and 23 is also the same as Row 5; there are now two more repeats of the pattern on each side of the center stitch, and (as before) the beginnings and ends of the rows differ.

Row 17: K2, *yo; (k1, yo, k2, sk2p, k2, yo) 16 times, k1; yo*, k1 (center stitch); rep from * to *; k2. [267 sts]

Row 19: K2, *yo, k1; (k1, yo, k2, sk2p, k2, yo) 16 times, k1; k1, yo*, k1 (center stitch); rep from * to *; k2. [271 sts]

Row 21: K2, *yo, k2; (k1, yo, k2, sk2p, k2, yo) 16 times, k1; k2, yo*, k1 (center stitch); rep from * to *; k2. [275 sts]

Row 23: K2, *yo, k3; (k1, yo, k2, sk2p, k2, yo) 16 times, k1; k3, yo*, k1 (center stitch); rep from * to *; k2. [279 sts]

Row 25: K2, *yo, k4; (k2, yo, k1, sk2p, k1, yo, k1) 16 times, k1; k4, yo*, k1 (center stitch); rep from * to *; k2. [283 sts]

Row 27: K2, *yo, k5; (k3, yo, sk2p, yo, k2) 16 times, k1; k5, yo*, k1 (center stitch); rep from * to *; k2. [287 sts]

Row 28: Knit.

Row 29: K2, yo, k to center st, yo, k1 (center stitch), yo, k to last 2 sts, yo, k2. [291 sts]

Row 30: Knit.

Work Picot Bind-Off

Bind off 5 sts. *Slip rem st from right-hand ndl back to left-hand ndl. Use knitted-on cast-on to cast on 3 sts. Bind off 11 sts. Rep from * to end of row. Fasten off.

Finishing

Weave in ends. Wet-block scarf to finished measurements.