

# PETRONA VEST

*by Luciana López  
sample by Lucia Segovia*



**MANOS**  
DEL URUGUAY  
— EST. 1968 —



## **Petrona Vest**

by Luciana López  
sample by Lucia Segovia

*In this design we work with straight knitting and color work techniques to generate a super interesting graphic texture of inclined "stripes". With a classic shape, neck to base and cropped length, it can give a special touch to basic garments. It is an ideal design for those who want to go one step further in the color change technique, without having so much prior experience.*

## **Finished Measurements**

Sizes - 1, (2, 3, 4, 5, 6, 7, 8)

Bust circumference - 31.5 (35, 38.5, 44, 48, 52, 55.5, 59 )" / 80 (89, 98.5, 112.5, 122, 132, 141, 150.5 ) cms

Shown in size 1 with zero ease.



## **Yarn**

Marla & Sami by Manos del Uruguay. (100% merino superwash ), approx. 273 yds / 250 mts per 100 g

Turmeric (A), Tomato (C ) and Chili (D): all sizes, 1 skein.

Gold (B): 1 (1, 1, 2, 2, 3, 3, 3) skeins.



## **Needles and Tools**

- One pair of straight needles in size 3,0 mm / #2,5 US. (Or size to obtain gauge)
- Circular knitting 3,0 mm / #2,5 US (to knit the neck)
- 1 tapestry needle.

## **Gauge**

22 sts and 33 rows = 4" [10 cm] in stockinette stitch, after blocking.

## **Abbreviations**

- K- Knit.
- P- Purl.
- k1 tbl- Knit through the back loop.
- p1tbl- Purl through the back loop.
- RS- Right Side.
- WS- Wrong Side.
- St/Sts- Stitch/Stitches.
- K2tog- Knit 2 stitches together.
- Ssk - Slip, slip, knit.

## Instructions

This vest will be worked in a straight knitting, so we will knit the front and back separately, then we sew both parts and finally we will knit the twisted rib of the neck and armhole.

The front will be worked in color work in stockinette stitch, while the back will be knitted in stockinette stitch but in a plain color.

## FRONT

With A color (Turmeric) cast on 87, (97, 107, 122, 132, 147, 157, 167). Edge stitches, for sewing, are included.

Work in twisted rib (k1 tbl, p1tbl) until piece measures 2,5 " (6,0 cms) from the cast on edge.

From here we start knitting the color work chart as follows for each size:

**For sizes 1, 2, 3 and 4 only:** you will knit the entire graph once. From here you can start to shape the armhole.

**For sizes 5, 6, 7 and 8 only:** you will knit the graph (from row 1 to 38) twice. From here you can start to shape the armhole.

\* Use the graphics to follow the instructions in each row.

The repeats of the chart for each size are a suggestion for the cropped length, but you can modify it to your liking.

## Front and Back Armholes Shape

**Important: We will BO the stitches at the beginning of each row.**

**Edge stitches are included.**

**Row 1:** BO 8 (8, 12, 12, 14, 16, 20, 22) sts, knit until the end, following the chart.

**Row 2:** BO 8 (8, 12, 12, 14, 16, 20, 22) sts, purl until the end, following the chart. - 71, (81, 83, 98, 104, 115, 117, 123) sts.

**Following two rows:**

BO 2 (2, 2, 3, 3, 3, 4, 4) - 67, (77, 79, 92, 98, 109, 109, 115) sts.

**Following two rows:**

BO 0 (2, 2, 2, 3, 3, 3, 3) - 67, (73, 75, 88, 92, 103, 103, 109) sts.

**Following two rows:**

BO 0 (0, 0, 0, 2, 2, 2, 2) - 67, (73, 75, 88, 88, 99, 99, 105) sts.

**Following two rows:**

BO 0 (0, 0, 0, 0, 0, 2, 2) - 67, (73, 75, 88, 88, 99, 95, 101) sts.

For all sizes:

Make the a decrease row in each RS 2 (4, 4, 4, 3, 5, 4, 5) times. - 63, (65, 67, 80, 82, 89, 87, 91) sts.

**Decreasing row:** K2, k2tog, knit, following the chart to 4 last sts, ssk, k2.

After last decreasing row of the armhole shaping we continue knitting the graphic chart for 29 (29, 35, 37, 37, 43, 43, 49) rows. About 3.5 (3.5, 4.5, 5, 5, 5.5, 5.5, 6.5)". 9 (9, 11, 12, 12, 14, 14, 16) cms.

\* Use the color work chart as a guide to visualize the repetitions.

## Front neckline - neck and right shoulder.

**Next row (RS):** K22 (22, 23, 27, 27, 30, 29, 30), BO 19 (21, 21, 26, 26, 29, 29, 31 ) sts. for center front neck, k22 (22, 23, 27, 28, 29, 29, 30).

Place left shoulder sts onto stitch holder or scrap yarn. 22 (22, 23, 27, 27, 30, 29, 30) right front shoulder sts rem.

**Next row (WS) and all even rows:** Purl to last st, sl1p wyif.

**Next row:** BO 3 (3, 4, 4, 4, 4, 4, 4) sts, k to end.

**Next row:** BO 2 (2, 3, 3, 3, 3, 3, 3) sts, k to end.

**Next row:** BO 2 sts, k to end.

**Next row:** BO 1 (1, 1, 1, 1, 2, 2, 2) sts, k to end.

**Next row:** BO 1 st, k to end.

Repeat last 3 rows two more times.

(The WS is included between the 2 RS).

Work 9 (9, 11, 15, 15, 15, 21, 21) more rows following the color work chart.

**Next row:** BO. Cut yarn.

## Front neckline - neck and left shoulder.

Place left front shoulder sts onto needle, with the right side of the knitting towards you.

**Next row and all even rows (RS):** Knit to last st, sl1p wyib.

**Next row:** BO 3 (3, 4, 4, 4, 4, 4, 4) sts, purl to end.

**Next row:** BO 2 (2, 3, 3, 3, 3, 3, 3) sts, p to end.

**Next row:** BO 2 sts, p to end.

**Next row:** BO 1 (1, 1, 1, 1, 2, 2, 2) sts, p to end.

**Next row:** BO 1 st, p to end.

Repeat last 3 rows two more times.

(The WS is included between the 2 RS).

Work 9 (9, 11, 15, 15, 15, 21, 21) more rows following the color work graphic.

**Next row:** BO. Cut yarn.





## BACK

With A color (Turmeric) cast on 87, (97, 107, 122, 132, 147, 157, 167). Edge stitches, for sewing, are included.

Work in twisted rib (k1 tbl, p1tbl) until piece measures 2 " (5.5 cms) from the cast on edge.

**IMPORTANT: For the back, try to keep the same gauge that we worked on the front, this will facilitate the join of the sides.**

**For sizes 1, 2, 3 and 4 only:** With color B (Gold) you will knit 58 rows in stockinette stitch. From here you can start to shape the armhole.

**For sizes 5, 6, 7 and 8 only:** With color B (Gold) you will knit 76 rows in stockinette stitch. From here you can start to shape the armhole.

**\* To shape back armholes, follow "Front and Back Armholes Shape" instructions, but always in one color.**

### Back neckline - neck and right shoulder.

**Next row (RS):** K22 (22, 23, 27, 27, 30, 29, 30), BO 19 (21, 21, 26, 26, 29, 29, 31 ) sts for center front neck, k22 (22, 23, 27, 28, 29, 29, 30). Place left shoulder sts onto stitch holder or scrap yarn. 22 (22, 23, 27, 27, 30, 29, 30) right front shoulder sts rem.

**Next row (WS) and all even rows:** Purl to last st, sl1p wyif.

**Next row:** BO 3 (3, 4, 4, 4, 4, 4, 4) sts, k to end.

**Next row:** BO 2 (2, 3, 3, 3, 3, 3, 3) sts, k to end.

**Next row:** BO 2 sts, k to end.

**Next row:** BO 1 (1, 1, 1, 1, 2, 2, 2) sts, k to end.

**Next row:** BO 1 st, k to end.

Repeat last 3 rows two more times.

(The WS is included between the 2 RS).

**Next row:** BO. Cut yarn.

### Back neckline - neck and left shoulder.

Place left front shoulder sts onto needle, with the right side of the knitting towards you.

**Next row (RS):** Knit to last st, sl1p wyib.

**Next row:** BO 3 (3, 4, 4, 4, 4, 4, 4) sts, purl to end.

**Next row (WS) and all even rows:** Knit to last st, sl1p wyif.

**Next row:** BO 2 (2, 3, 3, 3, 3, 3, 3) sts, p to end.

**Next row:** BO 2 sts, p to end.

**Next row:** BO 1 (1, 1, 1, 1, 2, 2, 2) sts, p to end.

**Next row:** BO 1 st, p to end.

Repeat last 3 rows two more times.

(The WS is included between the 2 RS).

**Next row:** BO. Cut yarn.

### Join front and back

After having both pieces knitted (front and back), we will join them with Mattress Stitch.

Reference video for mattress stitch on sides and shoulders:

<https://www.youtube.com/watch?v=ObuZwHlmDCI&t=114s>

## Neckline and Armhole twisted rib.

After having joined both pieces we are going to pick up the stitches (with the RS towards us), as follows:

Pick up 2 stitches every 3 stitches.

After picking up all stitches, knit 1x1 twisted rib (k1 tbl, p1tbl) until it measures 0.8" (2 cms).

**Important: You have to pick up an even number of stitches to be able to knit the 1x1 twisted elastic correctly.**

This ratio of stitches in the pick up depends on the gauge with which we are working, therefore it can vary for each particular case. If so, it is recommended to do the calculation for each specific case.

Reference video for picking up stitches at collar and armhole:

<https://www.youtube.com/watch?v=9A1ateS95qY&t=559s>

BO with the technique that you prefer, it is suggested a tubular bind off for 1x1 rib

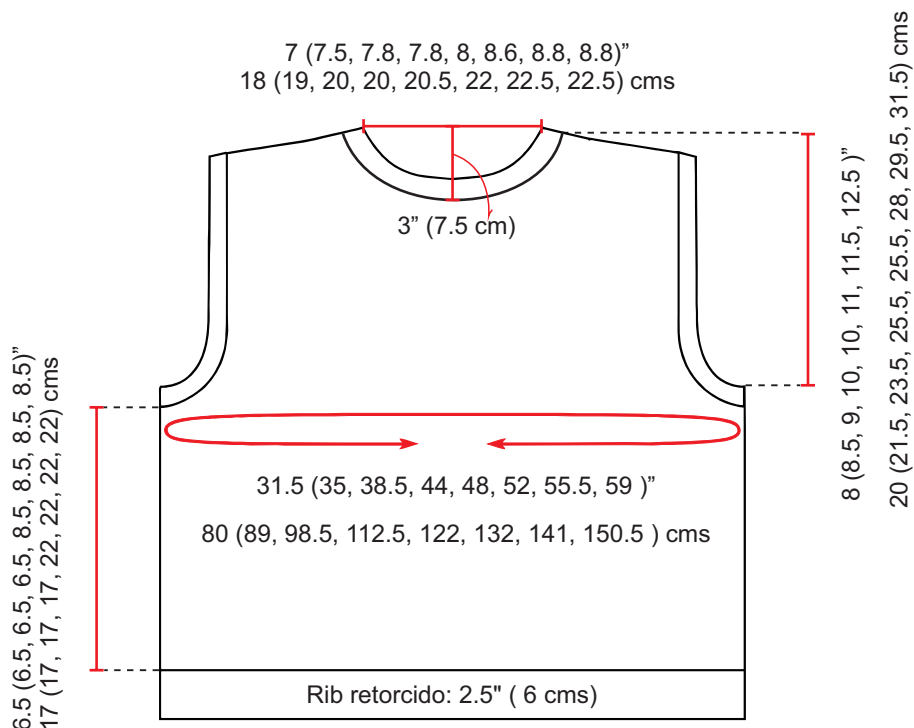
Reference video:

<https://www.youtube.com/watch?v=2c94VA0oxdo&t=5s>

## FINISHING:

Weave in ends. Steam- or wet-block piece to finished measurements.

## MEASURES

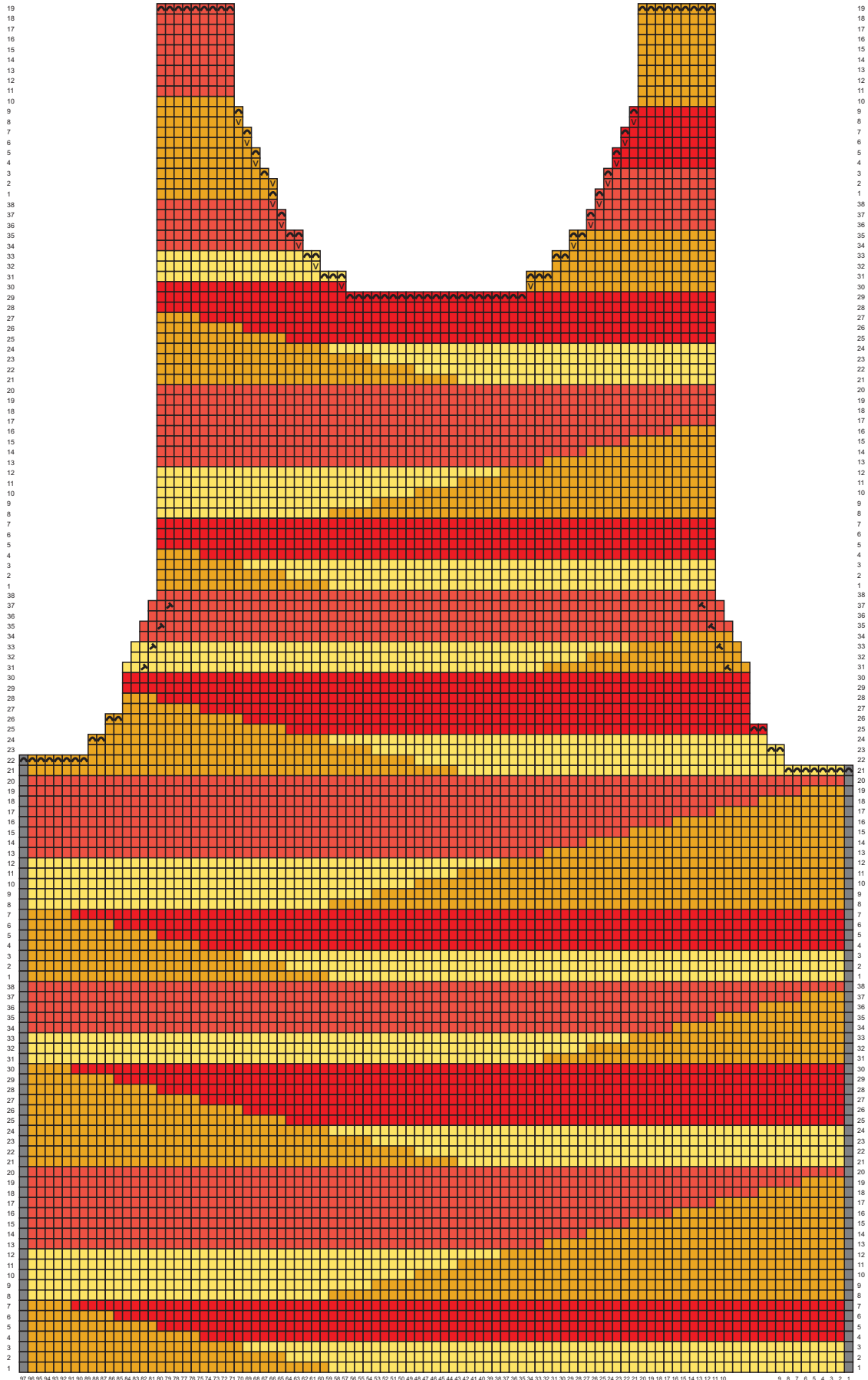


**Size 1**  
**Front Body, Armhole and Neckline Shape**



- Turmeric (A)
- Tomato (C)
- Edge stitch
- k2tog
- Gold (B)
- Chili (D)
- Bind off
- ssk

Size 2  
Front Body, Armhole and Neckline Shape



- Turmeric (A)
- Tomato (C)
- Edge stitch
- ↖ k2tog
- ∇ sl1p wyif (right shoulder)
- Gold (B)
- Chili (D)
- ↗ Bind off
- ↘ ssk
- ∇ sl1p wyib (left shoulder)

Size 3  
Front Body, Armhole and Neckline Shape



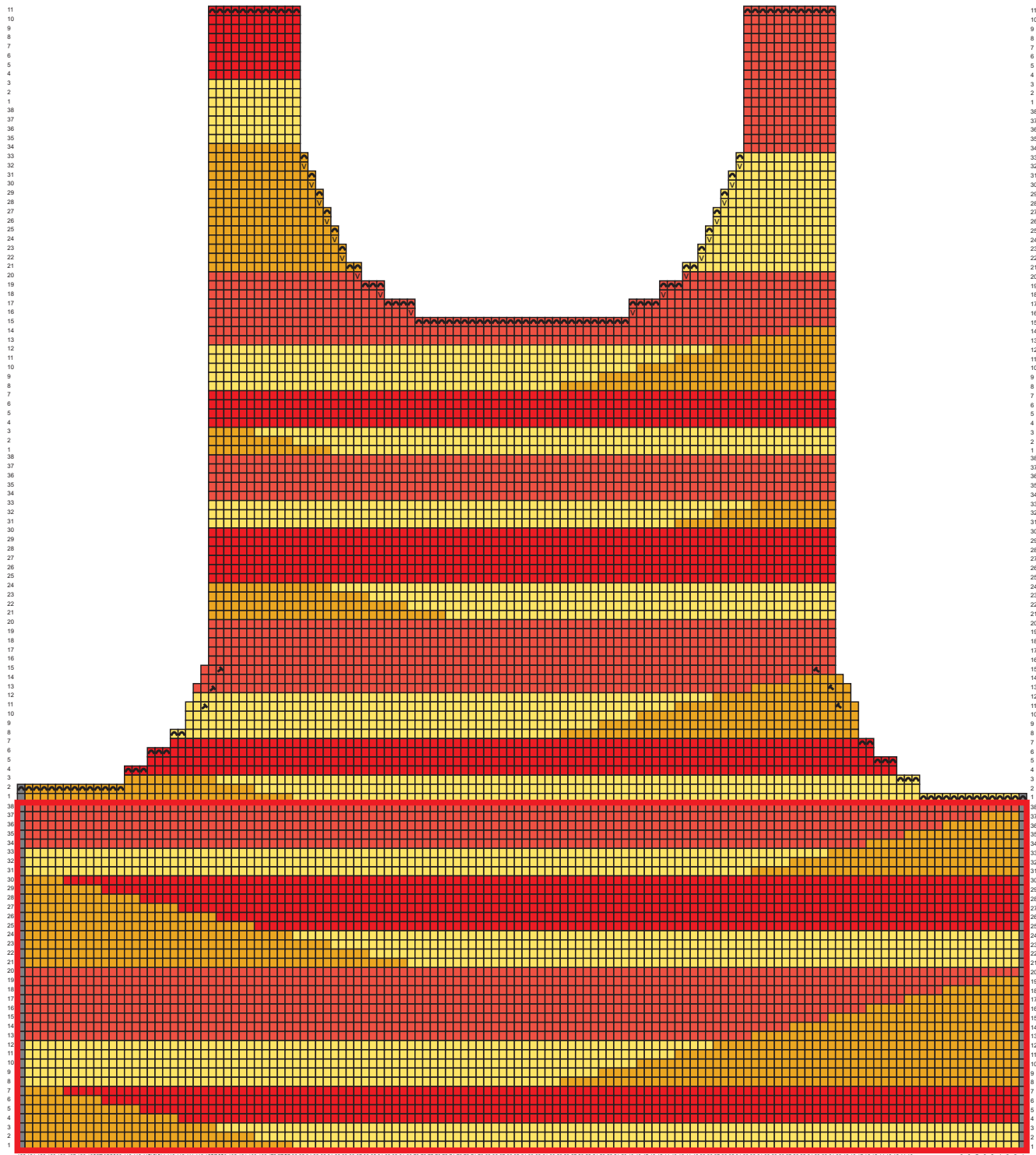
- Turmeric (A)
- Tomato (C)
- Edge stitch
- ▲ k2tog
- V sl1p wyif (right shoulder)
- Gold (B)
- Chili (D)
- ▲ Bind off
- ▲ ssk
- V sl1p wyib (left shoulder)

Size 4  
Front Body, Armhole and Neckline Shape



- Turmeric (A)
- Tomato (C)
- Edge stitch
- k2tog
- sl1p wyif (right shoulder)
- Gold (B)
- Chili (D)
- Bind off
- ssk
- sl1p wyib (left shoulder)

Size 5  
Front Body, Armhole and Neckline Shape



132 131 130 129 128 127 126 125 124 123 122 119 118 117 116 115 114 113 112 111 110 109 108 107 106 105 104 103 102 101 100 99 98 97 96 95 94 93 92 91 90 89 88 87 86 85 84 83 82 81 80 79 78 77 76 75 74 73 72 71 70 69 68 67 66 65 64 63 62 61 60 59 58 57 56 55 54 53 52 51 50 49 48 47 46 45 44 43 42 41 40 39 38 37 36 35 34 33 32 31 30 29 28 27 26 25 24 23 22 21 20 19 18 17 16 15 14 13 12 11 10 9 8 7 6 5 4 3 2 1

- Turmeric (A)
- Tomato (C)
- Edge stitch
- k2tog
- sl1p wyif (right shoulder)
- Repeat twice
- Gold (B)
- Chili (D)
- Bind off
- ssk
- sl1p wyib (left shoulder)

Size 6  
Front Body, Armhole and Neckline Shape



- Turmeric (A)
- Tomato (C)
- Edge stitch
- k2tog
- sl1p wyif (right shoulder)
- Repeat twice
- Gold (B)
- Chili (D)
- Bind off
- ssk
- sl1p wyib (left shoulder)

Size 7  
Front Body, Armhole and Neckline Shape



- Turmeric (A)
- Tomato (C)
- Edge stitch
- k2tog
- sl1p wyif (right shoulder)
- Repeat twice
- Gold (B)
- Chili (D)
- Bind off
- ssk
- sl1p wyib (left shoulder)

Size 8  
Front Body, Armhole and Neckline Shape



■ Turmeric (A)    ■ Tomato (C)    ■ Edge stitch    k2tog    V sl1p wyif (right shoulder)    □ Repeat twice  
■ Gold (B)    ■ Chili (D)    ■ Bind off    ssk    V sl1p wyib (left shoulder)





**MANOS**  
DEL URUGUAY  
— EST. 1968 —

